

# Ullman Sails Long Beach Race Week



June 21 - 23, 2024  
Alamitos Bay Yacht Club & Long Beach Yacht Club  
Long Beach, California, USA

<http://www.lbrw.org>



## SAILING INSTRUCTIONS

### 1. CHANGES TO SAILING INSTRUCTIONS

---

Any change to the sailing instructions will be posted before 1000 on the day it will take effect, except that any change to the schedule of races will be posted by 2000 on the day before it will take effect.

### 2. COMMUNICATIONS WITH COMPETITORS

---

- 2.1. As a courtesy, notices to competitors may be posted on the notice board located at LBYC on the glass sliding doors and windows of the Regatta Room which is located on the East face of the club, bottom floor overlooking the channel.
- 2.2. The race committee will use the following VHF Channels for communication:  
Channel 68 – Alpha Course : Patience  
Channel 69 – Charlie Course : Loynes

### 3. SIGNALS MADE ASHORE

---

- 3.1. Signals made ashore will be displayed on the LBYC flagpole.
- 3.2. When flag AP is displayed ashore, '1 minute' is replaced with 'not less than 60 minutes' in race signal AP. Boats are requested not to leave the harbor until this signal is lowered.
- 3.3. The race committee will broadcast its intentions to the Racing Areas on the VHF Channels designated in SI 2.2 thirty minutes before the scheduled warning.

### 4. SCHEDULE OF RACES

---

- 4.1. Registration at LBYC:  
*Thursday June 20, 2024 From 1200 to 1800*  
*Friday June 21, 2024 From 0800 to 1000*
- 4.2. Measurement, Inspection and Crew Weigh-In at LBYC:  
*Thursday June 20, 2024 From 1200 to 1800*  
*Friday June 21, 2024 From 0800 to 1000*
- 4.3. Competitors' Briefing at LBYC:  
*Friday 21, 2024 From 1030 to 1100*
- 4.4. Dates of Racing:  
*Friday June 21, 2024 1<sup>st</sup> Warning 1255*  
*Saturday June 22, 2024 1<sup>st</sup> Warning 1155*  
*Sunday June 23, 2024 1<sup>st</sup> Warning 1155*

### 5. CLASS FLAGS

---

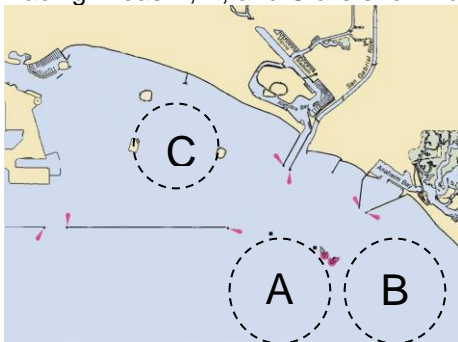
Class flag descriptions will be posted by 0900 on the day they will take effect.

# Ullman Sails Long Beach Race Week

## 6. RACING AREAS

---

- 6.1. Racing Areas A, B, and C are shown below.



- 6.2. Assignments of classes to Racing Areas will be posted by 0900 on the day they take effect.

## 7. COURSES

---

- 7.1. The course designation will be displayed on a placard from the race committee signal vessel.
- 7.2. For **One-Design**, and **PHRF**, the diagrams in “Attachment A – Buoy Racing Courses” show the courses, including the course signals, approximate angles between legs, the order in which marks are to be passed, and the side on which each mark is to be left. The course lengths may be adjusted to achieve target times. (see SI 14.1)
- 7.3. No later than the warning signal, the race committee signal vessel will display the approximate compass bearing and distance to the first mark.
- 7.4. For the **Random Leg Fleet**, the diagrams in “Attachment B – Random Leg Courses” show the courses, including the course signals, the order in which marks are to be passed, and the side on which each mark is to be left.

## 8. MARKS

---

- 8.1. Alpha Course Patience
- 8.1.1. Marks 1, 2, 3s and 3p are yellow inflatable shapes.
- 8.1.2. New marks, as provided in instruction 11, are orange inflatable shapes.
- 8.1.3. The starting mark is an orange inflatable shape.
- 8.1.4. The finishing mark is an orange inflatable shape.
- 8.2. Charlie Course Loynes
- 8.2.1. Marks 1, 2, 3s and 3p are orange inflatable shapes.
- 8.2.2. New marks, as provided in instruction 11, are yellow inflatable shapes.
- 8.2.3. The starting mark is a yellow inflatable shape.
- 8.2.4. The finishing mark is a yellow inflatable shape.
- 8.3. For the **Random Leg Fleet** the marks listed in Attachment B when used in a course are rounding marks.
- 8.4. For the **Random Leg Fleet**, if a mark is missing and the race committee is unable to replace the mark in accordance with RRS 34, boats shall round the location of the mark as published in Attachment B of these sailing instructions. This modifies RRS 34.

## 9. OBSTRUCTIONS

---

- 9.1. [DP] If a vessel is moored or has an anchor down within 300 yards of Island White (Mark 7), then the vessel and the two lines that are tangent to it and to Island White (Mark 7) bound an area that is an obstruction. Boats shall not sail into that area.



## 10. THE START

---

- 10.1. To alert boats that a sequence of starts will begin soon, the orange starting line flag will be displayed with one sound at least four minutes before a warning signal is displayed.

# Ullman Sails Long Beach Race Week

- 10.2. The race committee may change the first leg of the course by laying a new mark and signaling all boats by displaying flag C with repetitive sound signals at or shortly following the warning signal. The original mark will be removed as soon as practicable. When in a subsequent change a new mark is replaced, it will be replaced by an original mark.
- 10.3. The starting line is between a staff displaying an orange flag on the signal vessel at the starboard end and the course side of the port-end starting mark.
- 10.4. Boats whose warning signal has not been made shall keep clear of the starting area.
- 10.5. A boat that does not start within 5 minutes after her starting signal will be scored Did Not Start without a hearing. This changes RRS A4 and A5.
- 10.6. As a courtesy, the race committee will notify recalled boats by hailing her sail number over the designated VHF channel. (see SI 2.2) Failure of the committee to make the attempt or for the competitor to hear the hail will not be grounds for redress. This changes RRS 62.1(a).
- 10.7. For the **Catalina 37 class only** competitors may be required to reduce sail. The combination to be used will be signaled from the race committee vessel with or before the warning signal. The signals will be as follows:

Signal	Headsail	Spinnaker
 Flag J	Jib	Spinnaker
 Flag K	Jib	No Spinnaker

## 11. CHANGE OF THE NEXT LEG OF THE COURSE

---

To change the next leg of the course, the race committee will lay a new mark (or move the finishing line) and remove the original mark as soon as practicable. When in a subsequent change a new mark is replaced, it will be replaced by an original mark.

## 12. THE FINISH

---

- 12.1. The finishing line is between a staff displaying a blue flag on the signal vessel at the starboard end and the course side of the port-end finishing mark.
- 12.2. In the interest of starting another race in a timely fashion, the race committee may assign a finish position to the last finisher(s) in a class provided that the position(s) can be determined in a reasonable manner.

## 13. TIME LIMITS AND TARGET TIMES

---

- 13.1. The target time for **One-Design**, and **PHRF** races will be approximately 60 minutes. The target time for **Random Leg Fleet** races will be approximately 180 minutes.
- 13.2. **One-Design** boats failing to finish within 20 minutes after the first boat sails the course and finishes will be scored Did Not Finish without a hearing. This changes RRS 35, A4 and A5.

## 14. HEARING REQUESTS

---

- 14.1. Hearing request forms and Scoring Inquiry forms are available on-line [www.lbrw.org](http://www.lbrw.org). Hearing requests shall be submitted within the protest time limit.
- 14.2. The protest time limit for incidents observed in the racing area is 60 minutes after the race committee signal vessel for that racing area has docked. Other protests shall be delivered to the race office no later than one hour after the protestor receives the relevant information. This changes rule 61.3.
- 14.3. Notices will be posted no later than 30 minutes after the protest time limit to inform competitors of hearings in which they are parties or named as witnesses. This will constitute notice to all parties under RRS 63.2.
- 14.4. A notice of boats scored per RRS A5.1 will be posted within the protest time limit.

# Ullman Sails Long Beach Race Week

## 15. SCORING

---

- 15.1. **One-Design, and PHRF Fleets:** Seven (7) races are scheduled of which three (3) must be completed to constitute a series for the One-Design, and PHRF fleets.
- 15.2. **Random Leg Fleets:** Three (3) races are scheduled of which one (1) must be completed to constitute a series.
- 15.3. No scores will be excluded.
- 15.4. PHRF Classes will be scored using the base handicaps provided by the PHRF Southern California. All **PHRF** fleets will be scored using time-on-time scoring. For each boat, the "Time Correction Factor" (TCF) used will be calculated based on the following formula:  $TCF = 650 / (625 + PHRF)$  where "PHRF" is a boat's base SoCal PHRF handicap.

## 16. SAFETY REGULATIONS

---

- 16.1. [DP] A boat that retires from a race shall notify the race committee as soon as possible.

## 17. REPLACEMENT OF CREW OR EQUIPMENT

---

- 17.1. [DP] Entrants in classes that have an established crew weight limit and require weigh-ins must have their crews weighed-in by 1000 Friday, *June 21, 2024*.
- 17.2. [DP] In classes that require crew weigh-ins, entrants desiring to substitute crew must have substitute crew members weighed-in prior to 0900 on race day (Saturday and Sunday) at the race office located at LBYC. A crew substitution card, with the name of the substitute (who meets all requirements) and crew member replaced, must be submitted when being weighed-in and signed by a designated race committee official. Crew substitution cards are available at the race office.

## 18. EVENT ADVERTISING

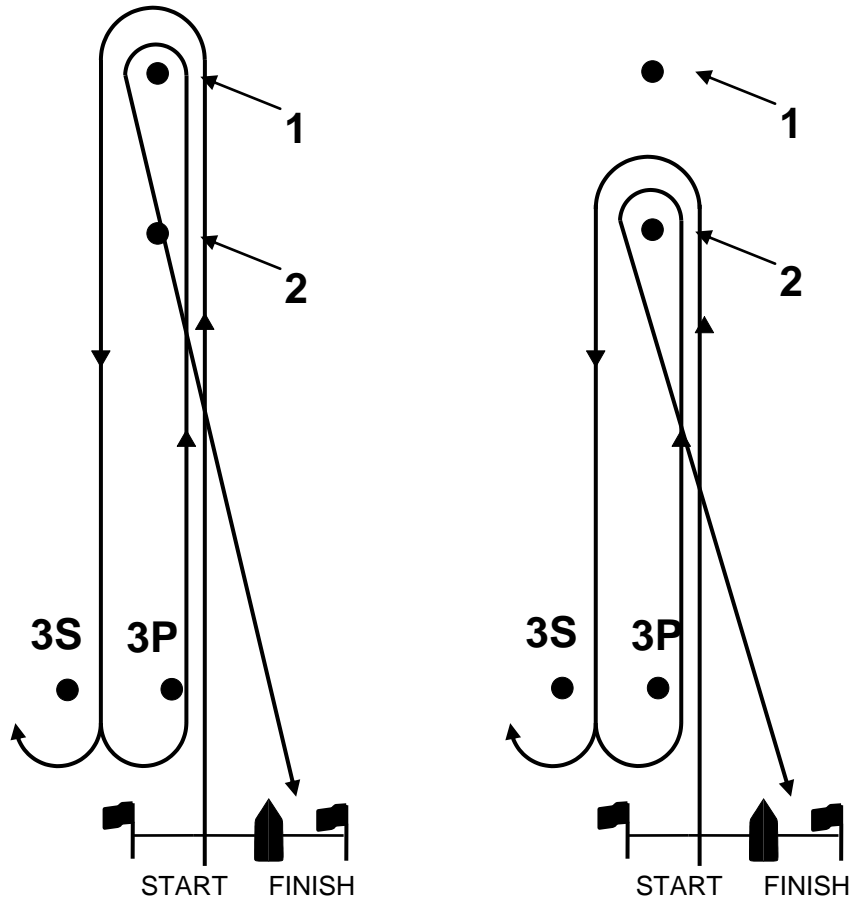
---

- 18.1. [DP] For boats of the Catalina 37 class, advertising may not be added to or removed from the hull, sails, or any equipment supplied with the boat from Long Beach Yacht Club Sailing Foundation.

# Ullman Sails Long Beach Race Week

## ATTACHMENT A – BUOY RACING COURSES

### Windward-Leeward Course (Short and Long leg course examples)



Course #		Mark Rounding Order (marks 1 & 2 rounded to port, mark 3 is a gate)
<b>1</b>	(2 legs)	Start – 1 – Finish
<b>2</b>	(4 legs)	Start – 1 – 3s/3p – 1 – Finish
<b>3</b>	(6 legs)	Start – 1 – 3s/3p – 1 – 3s/3p – 1 – Finish
<b>4</b>	(4 legs)	Start – 1 – 3s/3p – 2 – Finish
<b>5</b>	(2 legs)	Start – 2 – Finish
<b>6</b>	(4 legs)	Start – 2 – 3s/3p – 2 – Finish
<b>7</b>	(6 legs)	Start – 2 – 3s/3p – 2 – 3s/3p – 2 – Finish

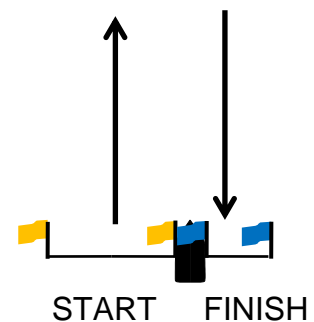
# Ullman Sails Long Beach Race Week

## ATTACHMENT B – RANDOM LEG COURSES

Course #	Distance	Mark Rounding Order
<b>A</b>	10.5	Start – 13/19 – 10 – 34 – 27 – 30 – Finish
<b>B</b>	11.2	Start – 30 – 3 – 8 – 7 – 9s – 27 – 30 – Finish
<b>C</b>	12.5	Start – 13/19 – 3 – 34 – 7 – 27 – 36 – Finish
<b>D</b>	12.8	Start – 82 – 30 – 34 – 9 – 30 – Finish
<b>E</b>	12.9	Start – 50/58 – 13/19 – 9 – 36 – Finish
<b>F</b>	13.5	Start – 82 – 1 – 37s – Finish
<b>G</b>	14.2	Start – 37s – 27 – 13/19 – 10 – 38s – 32 – 33 – 34 – 39 – 30 – Finish
<b>H</b>	15.0	Start – 55 – Finish
<b>I</b>	15.5	Start – 82 – 7s – 8 – 32 – 27 – 30 – Finish
<b>J</b>	16.6	Start – 30 – 32 – 27 – 30 – 8s – 32 – 39 – 36 – Finish
<b>K</b>	17.5	Start - 50/58 – 3 – 8 – 9 – 36 – Finish
<b>L</b>	17.5	Start – 13/19 – 3 – 32 – 34 – 7 – 27 – 36 – 10s – 13/19 – Finish
<b>M</b>	18.0	Start – 13/19 – 4 – 13/19 – Finish
<b>N</b>	18.8	Start – 13/19 – 3 – 32 – 34 – 7 – 27 – 36 – 8s – 10s – 13/19 – Finish
<b>O</b>	19.2	Start – 55 – 10 – 8 – 37s – Finish
<b>P</b>	19.8	Start – 21 – 4 – 5 – 10 – 37s – Finish
<b>Q</b>	23.6	Start – 50/58 – 20 – 13/19 – Finish
<b>R</b>	24.0	Start – 50/58 – 4 – 13/19 – Finish
<b>S</b>	24.4	Start – 13/19 – 18 – 4 – 1 – 10 – 37s – Finish

- Courses Start and Finish on Charlie Course
- All marks rounded to port unless designated otherwise. The designation “s” after a mark designates a mark that shall be rounded to starboard.
- Mark 13/19 is Queen’s Gate and mark 50/58 is Angels Gate. A string representing a boat’s track must pass through the gate from the direction of the course from the previous mark.

Start and Finish are as shown in the diagram opposite



# Ullman Sails Long Beach Race Week

## Schedule of Permanent Marks

MARK	Mark Description	Latitude	Longitude
Start	Charlie Course Race Committee (Approx)	33°44'32.67"N	118° 9'7.26"W
1	Anaheim Bay Channel Buoy - R "2" QR Whistle	33° 42.921'N	118° 6.557'W
3	Platform Esther	33° 43.118'N	118° 06.853'W
4	Platform Eva	33° 39.704'N	118° 3.723'W
5	Platform Emmy	33° 39.720'N	118° 2.610'W
7	Island White	33° 45.156'N	118° 9.596'W
8	Island Chaffee	33° 44.385'N	118° 8.346'W
9	Island Freeman	33° 44.473'N	118° 9.743'W
10	East End of Long Beach Breakwater	33° 43.376'N	118° 8.143'W
13	West End of Long Beach Breakwater "Queen's Gate"	33° 43.382'N	118° 11.148'W
16	Anaheim Bay Channel Buoy G "1" FL G 4 sec BELL	33° 43.007'N	118° 6.697'W
18	Platform Ellen & Elly	33° 34.950'N	118° 7.700'W
19	East End of Middle Breakwater "Queen's Gate"	33° 43.382'N	118° 11.148'W
20	Platform Edith	33° 35.750'N	118° 8.450'W
21	Scripps Waverider Buoy Y "215" FL (5) Y 20s	33° 42.017'N	118° 12.033'W
24	Anaheim Bay Channel Buoy CG"3"	33° 43.388'N	118° 6.379'W
27	R "2" Buoy near Pier J	33° 44.443'N	118° 10.633'W
50	West End of the Middle Breakwater - Angel's Gate	33° 42.490'N	118° 15.061'W
55	Point Fermin Whistle Buoy - R "6" FI R 4sec Whistle	33° 41.928'N	118° 17.500'W
58	East End of the San Pedro Breakwater Angel's Gate	33° 42.490'N	118° 15.061'W

## Schedule of Semi-Permanent Marks

MARK	Mark Description	Latitude	Longitude
2	Ring Bouy	33° 43.120'N	118° 07.690'W
30	Ring Buoy 100 yards north of West Measured Mile Marker	33° 43.480'N	118° 09.930'W
31	Ring Buoy 100 yards north of East Measured Mile Marker	33° 43.470'N	118° 08.740'W
32	Ring Buoy 1/2 mile NW from the West End of the Alamitos Bay Jetty.	33° 44.470'N	118° 07.430'W
33	Ring Buoy 1 mile NW of West End of Alamitos Bay Jetty.	33° 44.910'N	118° 08.090'W
34	Ring Buoy 500 yards east from the end of Belmont Pier.	33° 45.260'N	118° 08.750'W
35	Ring Buoy 600 yards west from the end of Seal Beach Municipal Pier	33° 44.070'N	118° 06.800'W
36	Ring Buoy 1/2 mile west of the West Measured Mile Marker, and 100 yards north of the Breakwater	33° 43.510'N	118° 10.430'W
37	Ring Buoy 100 yards north of the « mile Measured Mile Marker, midway between Mark 31 and Mark 30.	33° 43.470'N	118° 09.340'W
38	Ring Buoy 400 yards SE from the south Marker Horn on Island Chaffee.	33° 44.160'N	118° 08.150'W
39	Ring Buoy 1/2 mile ENE of Island Grissom	33° 45.560'N	118° 10.32'W
40	Ring Buoy, 3/4 mile SW of Seal Beach Pier.	33° 43.220'N	118° 07.120'W
82	Ring Buoy 100 yards north of the Middle Breakwater, about half way between bend in Breakwater and Angel's Gate.	33° 43.060'N	118° 13.560'W

1. When passing or rounding oil platforms boats must stay outside the Exclusion Zone.
2. Mark locations vary slightly due to tide changes which affects swing.
3. Marks may not be on station for various reasons.
4. The Ring Buoys are Yellow.
5. Locations and distances, when given are approximate
6. Chart references: No's, 18746 & 18749

# Ullman Sails Long Beach Race Week

