

# Ullman Sails Long Beach Race Week



June 21 – 23, 2024  
Alamitos Bay Yacht Club & Long Beach Yacht Club  
Long Beach, California USA

<http://www.lbrw.org>



**ULLMAN SAILS LONG BEACH RACE WEEK INCLUDES THE FOLLOWING CHAMPIONSHIPS**

**CATALINA 37 NATIONAL CHAMPIONSHIP**  
**BENETEAU 36.7 HIGH POINT SERIES**  
**MELGES 15 WEST COAST CHAMPIONSHIP**

## NOTICE OF RACE

*The notation '[DP]' in a rule in the NoR means that the penalty for a breach of that rule may, at the discretion of the protest committee, be less than disqualification.*

### 1. RULES

- 1.1. This event is governed by the rules as defined in *The Racing Rules of Sailing*.
- 1.2. The US Sailing Prescriptions to rule 63.1 and rule 63.2 do not apply.
- 1.3. The government rules as stated in the preamble to Part 2 are The International Regulations for Preventing Collisions at Sea (IRPCAS) and the U.S. Inland Navigation Rules (33 CFR 83). [Amalgamated International & U.S. Inland Navigation Rules | Navigation Center \(uscg.gov\)](https://www.uscg.gov/Navigation-Center/Amalgamated-International-&-U.S.-Inland-Navigation-Rules)
- 1.4. For PHRF classes, the U.S. Safety Equipment Requirements for Nearshore Races available at <https://www.ussailing.org/competition/offshore/safety-information/ser-world-sailing-special-regulations/> applies.
- 1.5. [RRS Appendix TS](#), version 2, Section A applies to the following TSS Los Angeles Long Beach Precautionary Area and Los Angeles Long Beach Western Approach. Appendix TS is available on the official notice board.
- 1.6. [DP] RRS 51 and RRS 52 are changed to allow a boat issued a current handicap that assumes her use of moving ballast or taking on or discharging water ballast is permitted to use that system.
- 1.7. [DP] RRS 52 is changed to allow the use of winches operated by using stored power.
- 1.8. [DP] For the purposes of RRS 47, Trash Disposal there will be no penalty for losing biodegradable sail stops overboard used for reasons of safety or proper seamanship.
- 1.9. Appendix T, Arbitration, will apply.

- 1.10. Appendix V, Rule V1, Penalty At The Time Of An Incident, will apply as changed below.

The first two sentences of rule 44.1 are changed to: 'A boat may take a One-Turn Penalty when she may have broken one or more rules of Part 2 or rule 31 in an incident while *racing*. However, when she may have broken one or more rules of Part 2 while in the *zone* around a *mark*, other than a starting *mark*, **that begins, bounds, or ends a leg of the course on which she is sailing**, her penalty shall be a Two-Turns Penalty.'

### 2. SAILING INSTRUCTIONS

- 2.1. The sailing instructions will be available on the official notice board.

### 3. COMMUNICATION

- 3.1. The official notice board is located online at <http://www.lbrw.org/race-info/>
- 3.2. [DP] While racing, except in an emergency, a boat shall not make voice or data transmissions and shall not receive voice or data communication that is not available to all boats.
- 3.3. The race committee will make use of VHF radios to keep sailors informed of Start Times, On Course Side (OCS), Postponements and other information regarding the racing.
- 3.4. Failure of the race committee to hail, failure of the amplification system or radios, the order of the hail, or failure of a boat to hear a hail shall not be grounds for a boat to request redress. This instruction changes RRS 41 and 62.1.

# Ullman Sails Long Beach Race Week

## 4. ELIGIBILITY AND ENTRY

- 4.1. This regatta is open to the following **One-Design classes**: Beneteau 36.7, Catalina 37, Farr 40, Express 37, J/70, J/109, J/111, J/120, Melges 15, Schock 35, Soling (*charter*), Viper 640, VX One. Additional One-Design classes will be accepted at the discretion of the organizing authorities based on the number of entries and the classes that are established.
- 4.2. **One-Design classes** not having five (5) entries by June 19, 2024 shall be automatically registered in a PHRF class, if applicable, unless permitted otherwise by the organizing authorities.
- 4.3. This regatta is open to **Performance Handicap Racing Fleet (PHRF)** boats having a PHRF handicap of 222 or less. PHRF boats will be separated into classes based on entries received and performance characteristics of the boats.
- 4.4. This regatta is open to **Ocean Racing Catamaran Association (ORCA)** boats wishing to sail random leg courses.
- 4.5. **PHRF** boats wishing to sail random leg courses should indicate so on their entry form.
- 4.6. Eligible boats must enter online at <http://www.lbrw.org>.
- 4.7. A boat shall be entered by a member in good standing of a club affiliated to US Sailing or other World Sailing member national authority, or a member of a World Sailing member national authority. (see RRS 75)
- 4.8. J70 Class. To be eligible for the "Corinthian Trophy" all crew members shall provide their World Sailing Sailor ID showing a Group 1 categorization on <https://www.sailing.org/sailors/profiles/> before registration is considered complete.
  - a) Competitors can obtain a Sailor ID by registering with World Sailing at <https://www.sailing.org/sailors/sailor-categorisations/>.
  - b) Boats where not all crew members are showing a Group 1 categorization will be placed in the Open division.
- 4.9. The late entry fee applies to entries received after **1800 Pacific on June 1, 2024**.
- 4.10. Entries will only be accepted after **1800 Pacific, Tuesday, June 18, 2024** at the discretion of the regatta organizers on the payment of an additional late entry fee.
- 4.11. **PHRF** Class Breaks: To provide 'like racing' under **PHRF**, boat displacement and other factors will be considered when determining class breaks.
- 4.12. The skipper (Person in Charge see RRS 46) of a boat or support vessel, or the Parent/Legal Guardian of the Release of Liability as part of online registration. When all competitors in a boat

are minors (participants under 18), each competitor's Parent/Legal Guardian shall accept and agree to the terms and conditions of the Regatta Waiver and Release of Liability as part of online registration.

- 4.13. To be considered an entry in the event, a boat shall complete all registration requirements and pay all fees.

## 5. FEES

Required Fees are as follows:

LOA	Standard before 1800 on June 1 <sup>st</sup>	Late Entry before 1800 on June 18 <sup>th</sup>
<b>20 Feet and Under</b> Melges 15, VX One, PHRF	<b>\$220</b>	<b>\$245</b>
<b>21-30 Feet</b> J/70, Viper 640, PHRF	<b>\$295</b>	<b>\$320</b>
<b>31-40 Feet</b> Beneteau 36.7, Farr 40, J109, J/111, J/120, Schock 35, PHRF	<b>\$330</b>	<b>\$355</b>
<b>41-50 Feet</b> PHRF	<b>\$410</b>	<b>\$435</b>
<b>Over 50 Feet</b> including TP 52, PHRF	<b>\$460</b>	<b>\$485</b>
<b>Catalina 37</b> plus Charter Fee & Class Assoc.	<b>\$330</b> +charter fee	<b>\$355</b> +charter fee
<b>Soling</b> plus Charter Fee & Class Assoc.	<b>\$295</b> +charter fee	<b>\$320</b> +charter fee

+Catalina 37 and Soling charters see NOR 17.

If an individual cancels their participation in race week by emailing [info@lbrw.org](mailto:info@lbrw.org), then the refund policy is as follows:

- a) Cancellation - before **1800 Pacific, Friday, June 14, 2024**: 90%.
- b) Cancellation - after **1800 Pacific, Friday, June 14, 2024** but before **1800 Pacific, Thursday, June 20, 2024**: 50%.
- c) Cancellation - after **1800 Pacific, Thursday, June 20, 2024** or failure to attend: No refund.

A boat's LOA should be rounded to the lower whole number (e.g. 35' 8" = 35') to determine fees. There will be no social fee.

Your entry fee includes the following:

- Entry to Ullman Sails Long Beach Race Week
- ABYC Friday After Race Party, including music, hors d'oeuvres and no host bar.
- LBYC Saturday After Race Party, including music, hors d'oeuvres and no host bar.
- Sunday Trophy Presentation and no host bar.

## 6. ADVERTISING

- 6.1. Boats may be required to display advertising chosen and supplied by the organizing authority.

# Ullman Sails Long Beach Race Week

## 7. SCHEDULE

- 7.1. Registration at LBYC:  
*Thursday June 20, 2024 From 1200 to 1800*  
*Friday June 21, 2024 From 0800 to 1000*
- 7.2. Competitors' Briefing at LBYC:  
*Friday June 21, 2024 From 1030 to 1100*
- 7.3. Dates of Racing:  
*Friday June 21, 2024 1<sup>st</sup> Warning 1255*  
*Saturday June 22, 2024 1<sup>st</sup> Warning 1155*  
*Sunday June 23, 2024 1<sup>st</sup> Warning 1155*

## 8. MEASUREMENTS

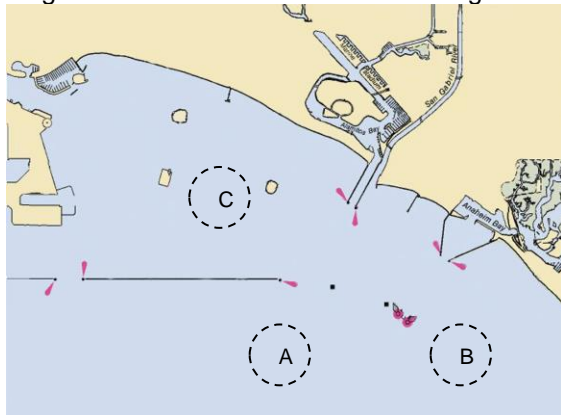
- 8.1. All boats are subject to additional measurement at any time.
- 8.2. Following each day's racing any boat may be inspected for compliance with their handicap certificate.

## 9. VENUE

- 9.1. The ABYC ★ and LBYC ★ are located on Alamitos Bay, which is situated in the southeastern part of Long Beach CA. The map below shows locations of the two clubs in Alamitos Bay.



- 9.2. There will be racing areas inside and outside the federal breakwater. Classes will be assigned to racing areas once class splits are known. The diagram below shows the racing areas.



## 10. THE COURSES

- 10.1. The courses for One-Design and PHRF classes will be of a windward leeward configuration.
- 10.2. The courses for the Random Leg fleet will be selected from those published in the sailing instructions. Those courses will include a variety of course lengths around marks and landmarks in San Pedro Bay area, both inside and outside the Federal breakwater.

## 11. SCORING

- 11.1. Seven (7) races are scheduled of which three (3) must be completed to constitute a series for the One-Design, and PHRF classes.
- 11.2. Random Leg Fleets: Three (3) races are scheduled of which one (1) must be completed to constitute a series.
- 11.3. A boat's series score will be the total of her race scores.
- 11.4. PHRF Classes will be scored using the base handicaps provided by the PHRF Southern California. All PHRF Classes will be scored using time-on-time scoring. For each boat, the "Time Correction Factor" (TCF) used will be calculated based on the following formula:  $TCF = 650 / (625 + PHRF)$  where "PHRF" is a boat's base SoCal PHRF handicap.

## 12. BERTHING

- 12.1. Alamitos Bay Marina
- Boats requesting berthing **MUST** contact the LBYC Waterfront Director for further information: e-mail [waterfront@lbyc.org](mailto:waterfront@lbyc.org).
  - The number of transient slips and dock space available in Alamitos Bay Marina is limited. Rafting will be necessary, and registration is required. Boats requiring a berth in Alamitos Bay Marina for Ullman Sails Long Beach Race Week should indicate their intended arrival and departure dates on their online entry form.
  - Berthing assignments will be published on the Ullman Sails Long Beach Race Week website. <http://www.lbrw.org> posted on the official notice board.
  - Boats requesting berths before Sunday, June 16, 2024 or after Tuesday, June 25, 2024 **MUST** contact the LBYC Waterfront Director for further information: email [waterfront@lbyc.org](mailto:waterfront@lbyc.org)
  - Longer term storage is very limited and will be assigned on a first come basis.
- 12.2. Alamitos Bay Yacht Club Yard and Basin
- Due to space limitations, vehicle parking on ABYC grounds is restricted. Off-street

# Ullman Sails Long Beach Race Week

metered parking is available across the street in municipal lots.

- b) Visiting competing boats may request extended storage online at <https://abyc.org/visiting-sailors>. The cost is \$20.00 per day paid in advance. Please note ABYC is closed on Monday and Tuesday.
- c) Any boat or trailer found on ABYC property without prior written authorization from ABYC is subject to impound and associated fees.
- d) Boats requesting yard storage before Sunday, June 16, 2024 or after Tuesday, June 25, 2024 **MUST** contact the ABYC Office for further information: [regattas@abyc.org](mailto:regattas@abyc.org) or +1 562-434-9955.

## 13. PRIZES

- 13.1. Boat of the Day and daily awards to winners of Friday and Saturday racing in each established fleet will be presented.
- 13.2. Overall series awards will be presented to each established fleet.
- 13.3. The following prizes will be presented to individual boats:

### Satariano Boat of the Week

To the one-design class winner whose class featured the closest, most competitive racing for the series

### PHRF Boat of the Week

To the PHRF class winner whose class featured the closest, most competitive racing for the series

### Campbell Cup

Winner of the Big Boat Class

### Catalina 37 National Championship

Winner of the Catalina 37 class

### Kent Golison Family Trophy

Highest placing boat in the regatta that is sailed by at least three members of an immediate family

### Travel Trophy

Boat owner who has traveled the farthest (based on hometown)

### Yacht Club Challenge

The yacht club whose team has the lowest combined score. A yacht club may enter up to three (3) individual teams.

## 14. RISK STATEMENT

- 14.1. RRS 3 states: 'The responsibility for a boat's decision to participate in a race or continue racing is hers alone.' By participating in this event each competitor agrees and acknowledges that sailing is a potentially dangerous activity with inherent risks. These risks include strong winds and rough seas, sudden changes in weather, failure of equipment, boat handling errors, poor seamanship by other boats, loss of balance on an

unstable platform and fatigue resulting in increased risk of injury. **Inherent in the sport of sailing is the risk of permanent, catastrophic injury or death by drowning, trauma, hypothermia or other causes.**

## 15. INSURANCE

- 15.1. Each participating boat shall be insured with valid third-party liability insurance with minimum coverage of US \$300,000.00 per event or the equivalent.

## 16. DEPICTION RELEASE

- 16.1. Competitors, by competing in this event, grant to the Host, perpetually and irrevocably, the unconditional and exclusive right, title and interest throughout the world to use, simulate and portray Participant's name, likeness, voice, personality, personal identification and personal experiences, incidents, situations and events, whether visual and/or audio, including without limitation photographs, videotape, film and other recordings, electronic or optical-based media, or any other form or medium whatsoever, whether now or hereafter existing, and of every kind and character (collectively "The Images"), which may be taken or taken of Participant while participating in any aspect of the event.

## 17. CHARTERED BOATS

- 17.1. Submit a request to charter a Catalina 37 or Soling boat. Boats will be allocated one per club with preference being given to a) Host clubs, b) Previous winner, c) Sponsors, d) Most geographically distant. Invitations will be sent by March 15, 2024. Any remaining boats will be allocated on a first come first served basis. Please note that your reservation is not secured until your full entry and charter fee is paid to the regatta per NoR sections 4 and 4.12.

**Catalina 37.** Chartering please contact Long Beach Sailing Foundation to make a reservation:

Charter Manager: Mary Voigt

Phone: (760) 568-2163

Email: [chartermanager@lbyscf.org](mailto:chartermanager@lbyscf.org)

**Soling.** Chartering please contact Long Beach Yacht Club race office to make a reservation:

Charter Manager: Race Office

Phone: (562) 294-5161

Email: [raceoffice@lbyc.org](mailto:raceoffice@lbyc.org)

## 18. FURTHER INFORMATION

Please email questions to: [info@lbrw.org](mailto:info@lbrw.org).