

Ullman Sails Long Beach Race Week



June 23 - 25, 2023
Alamitos Bay Yacht Club & Long Beach Yacht Club
Long Beach, California, USA

<http://www.lbrw.org>



SAILING INSTRUCTIONS

The Organizing Authorities for Long Beach Race Week will be the Alamitos Bay Yacht Club (ABYC), 7201 East Ocean Blvd, Long Beach, CA 90803 and the Long Beach Yacht Club (LBYC), 6201 Appian Way, Long Beach, CA 90803.

1. RULES

- 1.1. See NoR 1.
- 1.2. NoR 1.3 is changed as follows: The Catalina 37 fleet will **NOT** be subject to on-the-water umpiring.

2. CHANGES TO SAILING INSTRUCTIONS

Any change to the sailing instructions will be posted before 1000 on the day it will take effect, except that any change to the schedule of races will be posted by 2000 on the day before it will take effect.

3. COMMUNICATIONS WITH COMPETITORS

- 3.1. As a courtesy, notices to competitors may be posted on the notice board located at LBYC on the glass sliding doors and windows of the Regatta Room which is located on the East face of the club, bottom floor overlooking the channel.
- 3.2. The race committee will use the following VHF Channels for communication:
Channel 68 – Alpha Course : Patience
Channel 69 – Charlie Course : Loynes

4. SIGNALS MADE ASHORE

- 4.1. Signals made ashore will be displayed on the LBYC flagpole.
- 4.2. When flag AP is displayed ashore, '1 minute' is replaced with 'not less than 60 minutes' in race signal AP. Boats are requested not to leave the harbor until this signal is lowered.
- 4.3. The race committee will broadcast its intent to the Racing Areas on the VHF Channels designated in SI 3.2 thirty minutes before the scheduled warning.

5. SCHEDULE OF RACES

- 5.1. Registration at LBYC:
Thursday June 22, 2023 From 1200 to 1800
Friday June 23, 2023 From 0800 to 1000
- 5.2. Measurement, Inspection and Crew Weigh-In at LBYC:
Thursday June 22, 2023 From 1200 to 1800
Friday June 23, 2023 From 0800 to 1000
- 5.3. Competitors' Briefing at LBYC:
Friday 23, 2023 From 1030 to 1100
- 5.4. Dates of Racing:
Friday June 23, 2023 1st Warning 1255
Saturday June 24, 2023 1st Warning 1155
Sunday June 25, 2023 1st Warning 1155

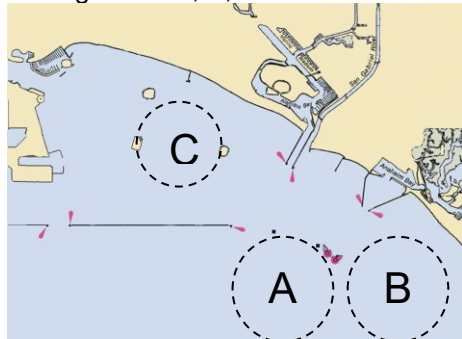
Ullman Sails Long Beach Race Week

6. CLASS FLAGS

Class flag descriptions will be posted by 0900 on the day they will take effect.

7. RACING AREAS

7.1. Racing Areas A, B, and C are shown below.



7.2. Assignments of classes to Racing Areas will be posted by 0900 on the day they will take effect.

8. COURSES

- 8.1. For **One-Design**, and **PHRF**, the diagrams in “Attachment A – Buoy Racing Courses” show the courses, including the course signals, approximate angles between legs, the order in which marks are to be passed, and the side on which each mark is to be left. The course lengths will be adjusted to provide appropriate amounts of racing.
- 8.2. For the **Random Leg Fleet**, the diagrams in “Attachment B – Random Leg Courses” show the courses, including the course signals, the order in which marks are to be passed, and the side on which each mark is to be left.
- 8.3. The course designation will be displayed on a placard from the race committee signal vessel.
- 8.4. No later than the warning signal, the race committee signal vessel will display the approximate compass bearing and distance to the first mark.

9. MARKS

- 9.1. Alpha Course Patience
 - 9.1.1. Marks 1, 2, 3s and 3p are yellow inflatable shapes.
 - 9.1.2. New marks, as provided in instruction 12, are orange inflatable shapes.
- 9.2. Charlie Course Lyones
 - 9.2.1. Marks 1, 2, 3s and 3p are orange inflatable shapes.
 - 9.2.2. New marks, as provided in instruction 12, are yellow inflatable shapes.
- 9.3. The starting mark is a mark with a staff displaying an orange flag.
- 9.4. The finishing mark is a mark with a staff displaying a blue flag.
- 9.5. For the **Random Leg Fleet** the marks listed in Attachment B when used in a course are rounding marks.
- 9.6. For the **Random Leg Fleet**, if a mark is missing and the race committee is unable to replace the mark in accordance with RRS 34, boats shall round the location of the mark as published in Attachment B of these sailing instructions. This modifies RRS 34.



10. OBSTRUCTIONS

- 10.1. [DP] If a vessel is moored or has an anchor down within 300 yards of Island White (Mark 7), then the vessel and the two lines that are tangent to it and to Island White (Mark 7) bound an area that is an obstruction. Boats shall not sail into that area.

Ullman Sails Long Beach Race Week

11. THE START

- 11.1. To alert boats that a sequence of starts will begin soon, the orange starting line flag will be displayed with one sound at least four minutes before a warning signal is displayed.
- 11.2. The race committee may change the first leg of the course by laying a new mark and signaling all boats by displaying flag C with repetitive sound signals at or shortly following the warning signal. The original mark will be removed as soon as practicable. When in a subsequent change a new mark is replaced, it will be replaced by an original mark.
- 11.3. The starting line is between a staff displaying an orange flag on the signal vessel at the starboard end and the course side of the port-end starting mark..
- 11.4. Boats whose warning signal has not been made shall keep clear of the starting area.
- 11.5. A boat that does not start within 10 minutes after her starting signal will be scored Did Not Start without a hearing. This changes RRS A4 and A5.
- 11.6. As a courtesy, the race committee will notify recalled boats by hailing her sail number over the designated VHF channel. (see SI 3.2) Failure of a boat to see or hear her recall notification shall not be grounds for redress. This changes RRS 62.1(a).
- 11.7. For the **Catalina 37 class only** competitors may be required to reduce sail. The combination to be used will be signaled from the race committee vessel with or before the warning signal. The signals will be as follows:

Signal	Headsail	Spinnaker
 Flag J	Jib	Spinnaker
 Flag K	Jib	No Spinnaker

12. CHANGE OF THE NEXT LEG OF THE COURSE

To change the next leg of the course, the race committee will lay a new mark (or move the finishing line) and remove the original mark as soon as practicable. When in a subsequent change a new mark is replaced, it will be replaced by an original mark.

13. THE FINISH

- 13.1. The finishing line is between a staff displaying a blue flag on the signal vessel at the starboard end and the course side of the port-end finishing mark.
- 13.2. In the interest of starting another race in a timely fashion, the race committee may assign a finish position to the last finisher(s) in a class provided that the position(s) can be determined in a reasonable manner.

14. TIME LIMITS AND TARGET TIMES

- 14.1. The target time for **One-Design**, and **PHRF** races will be approximately 60 minutes. The target time for **Random Leg Fleet** races will be approximately 180 minutes.
- 14.2. **One-Design** boats failing to finish within 20 minutes after the first boat sails the course and finishes will be scored Did Not Finish without a hearing. This changes RRS 35, A4 and A5.

15. HEARING REQUESTS

- 15.1. Protest forms are available at the race office located at LBYC. Protests shall be delivered to the race office within the protest time limit.
- 15.2. The protest time limit for incidents observed in the racing area is 60 minutes after the race committee signal vessel for that racing area has docked. Other protests shall be delivered to the race office no later than one hour after the protestor receives the relevant information. This changes rule 61.3.

Ullman Sails Long Beach Race Week

- 15.3. Notices will be posted no later than 30 minutes after the protest time limit to inform competitors of hearings in which they are parties or named as witnesses. This will constitute notice to all parties under RRS 63.2. See also SI 16 Arbitration.
- 15.4. The race committee will post a list of On Course Side (OCS) boats and will endeavor to post the preliminary results before the protest time limit.

16. ARBITRATION

- 16.1. Appendix T, Arbitration, will apply.

17. SCORING

- 17.1. **One-Design, and PHRF Fleets:** Seven (7) races are scheduled of which three (3) must be completed to constitute a series for the One-Design, and PHRF fleets.
- 17.2. **Random Leg Fleets:** Three (3) races are scheduled of which one (1) must be completed to constitute a series.
- 17.3. No scores will be excluded.
- 17.4. PHRF Classes will be scored using the base handicaps provided by the PHRF Southern California. All **PHRF** fleets will be scored using time-on-time scoring. For each boat, the "Time Correction Factor" (TCF) used will be calculated based on the following formula:
TCF = $650 / (625 + \text{PHRF})$ where "PHRF" is a boat's base SoCal PHRF handicap.

18. SAFETY REGULATIONS

- 18.1. [DP] A boat that retires from a race shall notify the race committee as soon as possible.

19. REPLACEMENT OF CREW OR EQUIPMENT

- 19.1. [DP] Entrants in classes that have an established crew weight limit and require weigh-ins must have their crews weighed-in by 1000 Friday, *June 23, 2023*.
- 19.2. [DP] In classes that require crew weigh-ins, entrants desiring to substitute crew must have substitute crew members weighed-in prior to 0900 on race day (Saturday and Sunday) at the race office located at LBYC. A crew substitution card, with the name of the substitute (who meets all requirements) and crew member replaced, must be submitted when being weighed-in and signed by a designated race committee official. Crew substitution cards are available at the race office.

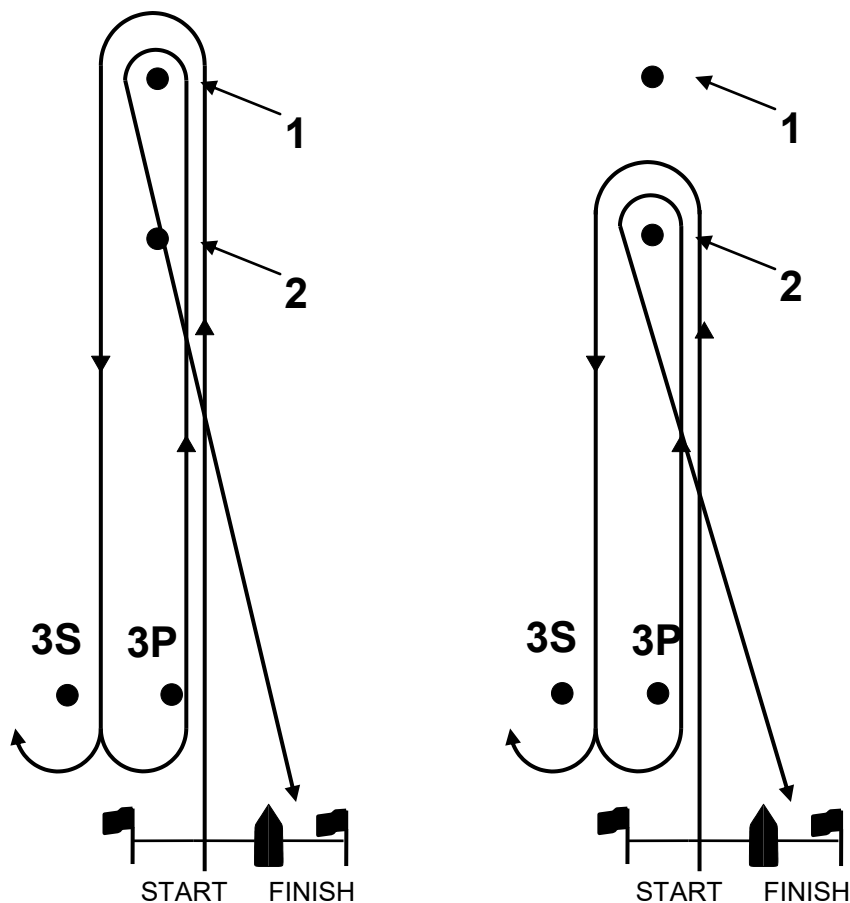
20. EVENT ADVERTISING

- 20.1. [DP] For boats of the Catalina 37 class, advertising may not be added to or removed from the hull, sails, or any equipment supplied with the boat from Long Beach Yacht Club Sailing Foundation.

Ullman Sails Long Beach Race Week

ATTACHMENT A – BUOY RACING COURSES

Windward-Leeward Course (Short and Long leg course examples)



Course #	Mark Rounding Order (marks 1 & 2 rounded to port, mark 3 is a gate)
1	(2 legs) Start – 1 – Finish
2	(4 legs) Start – 1 – 3s/3p – 1 – Finish
3	(6 legs) Start – 1 – 3s/3p – 1 – 3s/3p – 1 – Finish
4	(4 legs) Start – 1 – 3s/3p – 2 – Finish
5	(2 legs) Start – 2 – Finish
6	(4 legs) Start – 2 – 3s/3p – 2 – Finish
7	(6 legs) Start – 2 – 3s/3p – 2 – 3s/3p – 2 – Finish