

# Acura presents Ullman Sails Long Beach Race Week

June 26 - 28, 2009

Alamitos Bay Yacht Club & Long Beach Yacht Club

Long Beach, California USA

<http://www.lbrw.org>



## LONG BEACH RACE WEEK INCLUDES THE FOLLOWING CHAMPIONSHIPS

**CATALINA 37 NATIONAL CHAMPIONSHIP**

**FARR 40 WEST COAST CHAMPIONSHIP**

**J/29 WEST COAST CHAMPIONSHIP**

**J/24 DISTRICT 21 CHAMPIONSHIP**

**OPEN 5.70 WEST COAST CHAMPIONSHIP**

**SCHOCK 35 PACIFIC COAST CHAMPIONSHIP**

**BENETEAU 36.7 SOUTHERN CALIFORNIA CHAMPIONSHIP**

**J/80, J/105, J/109 AND J/120 SOUTHERN CALIFORNIA HIGH POINT SERIES**

**CAL 25 CARL KINDRICH CHALLENGE CUP**

## NOTICE OF RACE

The Organizing Authorities for Long Beach Race Week will be the Alamitos Bay Yacht Club (ABYC), 7201 East Ocean Blvd, Long Beach, CA. 90803 and the Long Beach Yacht Club (LBYC), 6201 Appian Way, Long Beach, CA. 90803.

### 1. RULES

- 1.1. The Regatta will be governed by the "rules" as defined in The Racing Rules of Sailing (RRS).
- 1.2. Competitors are reminded that under the preamble of Part 2 of the RRS boats racing must comply with rule 9 of the Inland Navigation Rules (72 COLREGS) when they meet other marine traffic.
- 1.3. For PHRF classes, the Regatta will be a Category 4 event as defined by PHRF of Southern California.
- 1.4. For PHRF classes, the Marine Industry Racer (MIR) rule of PHRF of Southern California will not apply to this regatta.

### 2. ADVERTISING

- 2.1. For boats of the Catalina 37 class, the SIs state that advertising may not be added to or removed from any equipment supplied with the boat from Long Beach Yacht Club Sailing Foundation.

### 3. ELIGIBILITY AND ENTRY

- 3.1. This regatta is open to the following **One-Design classes**: Beneteau 36.7, Cal 25, Catalina 37, Farr 40, Flying Tiger 10, J/105, J/109, J/120, J/24, J/29, J/80, Melges 24, Olson 30, Open 5.70 Schock 35. Additional One-Design classes will be accepted at the discretion of the Competition Chair based on the number of entries and the classes that are established. Submit requests to [info@lbrw.org](mailto:info@lbrw.org).
- 3.2. **One-Design classes** not having six (6) entries by June 23, 2009 shall be automatically registered in a PHRF class, if applicable, unless permitted otherwise by the Competition Chair.
- 3.3. This regatta is open to **Performance Handicap Racing Fleet (PHRF)** boats having a PHRF handicap of 222 or less. PHRF boats will be separated into classes based on entries received and performance characteristics of the boats.
- 3.4. **PHRF** boats wishing to sail random leg courses should indicate so on their entry form.
- 3.5. Eligible boats may enter by entering online at <http://www.lbrw.org>, or by completing the entry form and sending a copy together with the



# Acura presents Ullman Sails Long Beach Race Week

required fee described in NOR 4, to Long Beach Race Week, 6201 Appian Way, Long Beach, CA 90803.

- 3.6. An early entry discount as shown in SI 4 applies to entries received on or before **June 1, 2009**. To receive the discount, the Organizing Authorities must receive a completed entry form with the appropriate fee and attachments by that date. Entry acknowledgment will be e-mailed to valid entrants no later than June 15. **No entries will be accepted after 1800 PST, Tuesday, June 23, 2009** without the approval of the Competition Chair and payment of a substantial additional late fee.
- 3.7. This regatta will be a level C regatta for the J/105 class as defined by Membership and Eligibility rule 3.6 of the J/105 Class Association Rules.
- 3.8. If an individual cancels their participation in race week, then the refund policy is as follows:
  - 3.8.1. Notice period of Cancellation - Greater than 24 hours: 100% refund of the entry fee less administrative fee of \$50
  - 3.8.2. Notice period of Cancellation - Less than 24 hours or failure to attend: No refund
- 3.9. Best efforts will be made to have the preliminary **PHRF** class breaks for each entry posted on the Race Week web site by May 1, 2009.
- 3.10. **PHRF** Class Breaks: In an effort to provide 'like racing' under **PHRF**, boat displacement and other factors will be considered when determining class breaks.

## 4. FEES

Required Fees are as follows:

LOA	Early Entry Before June 2	Standard Entry before June 20th
<b>30 Feet and Under</b> including J/29, J/80, Melges 24, Olson 30, Open 5.70, & PHRF	<b>\$150</b>	<b>\$200</b>
<b>31-40 Feet</b> including Catalina 37, Farr40, J/105, J/120, Schock 35, & PHRF	<b>\$200</b>	<b>\$250</b>
<b>41-50 Feet</b> including PHRF	<b>\$250</b>	<b>\$300</b>
<b>Over 50 Feet</b> including PHRF	<b>\$275</b>	<b>\$325</b>

Your entry fee includes the following:

- Entry to Long Beach Race Week

- ABYC Friday After Race Party, including live band, complimentary hors d'oeuvres and no host bar
- LBYC Saturday After Race Party, including Mt Gay Rum Party, complimentary hors d'oeuvres and no host bar
- Sunday Trophy Presentation Party, including complimentary hors d'oeuvres and no host bar
- Additional party tickets may be purchased at a nominal fee.
- Free berthing for the regatta for ALL boats. To coordinate please see NOR 12.

## 5. SCHEDULE

- 5.1. Registration at LBYC:
 

Thursday June 25, 2009	From 1200 to 1800
Friday June 26, 2009	From 0800 to 1000
- 5.2. Measurement, Inspection and Crew Weigh-In at LBYC:
 

Thursday June 25, 2009	From 1200 to 1800
Friday June 26, 2009	From 0800 to 1000
- 5.3. Competitors' Briefing at LBYC:
 

Friday June 26, 2009	From 1030 to 1100
----------------------	-------------------
- 5.4. Dates of Racing:
 

Friday June 26, 2009	1 <sup>st</sup> Warning	1255
Saturday June 27, 2009	1 <sup>st</sup> Warning	1155
Sunday June 28, 2009	1 <sup>st</sup> Warning	1155

## 6. MEASUREMENTS

- 6.1. Crew weigh-in is required for One Design classes whose rules specify crew weight limits. The classes include J/105.
- 6.2. All boats are subject to additional measurement at any time at the reasonable discretion of the Competition Chair.
- 6.3. Following each day's racing one or more PHRF boats may be inspected for compliance with their handicap certificate.

## 7. SAILING INSTRUCTIONS

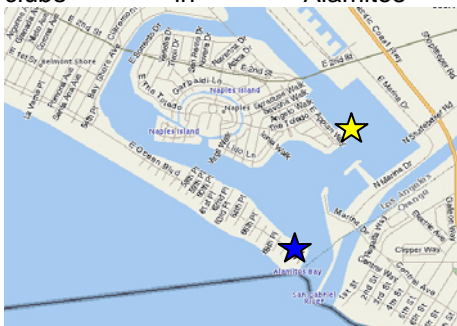
- 7.1. Sailing Instructions (SIs) will be available at registration.
- 7.2. Preliminary SIs will be available on the Long Beach Race Week website <http://www.lbrw.org> on or before May 1<sup>st</sup>, 2009.
- 7.3. The Organizing Authorities reserve the right to amend versions of the SIs on the website without prior notice.



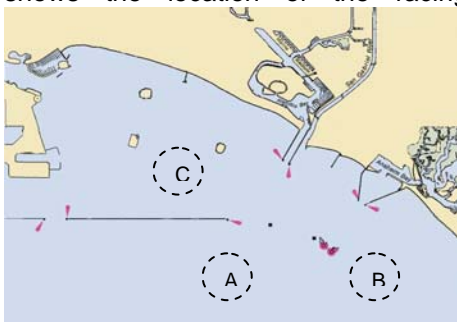
# Acura presents Ullman Sails Long Beach Race Week

## 8. VENUE

- 8.1. The ABYC ★ and LBYC ★ are located on Alamitos Bay, which is situated in the southeastern part of Long Beach California. The diagram below shows locations of the two clubs in Alamitos Bay.



- 8.2. It is anticipated that there will be three (3) separate racing areas, each with its own race committee. As entries and class splits are not known in advance, it is not possible to assign racing areas in advance. The diagram below shows the location of the racing areas.



## 9. THE COURSES

- 9.1. The courses for One-Design, and PHRF classes will be of a windward leeward configuration.
- 9.2. The courses for the Random Leg fleet will be selected from those published in the Sailing Instructions. Those courses will include a variety of course lengths around marks and landmarks in San Pedro Bay area, both inside and outside the Federal breakwater.

## 10. PENALTY SYSTEM

Rule 44 will be changed in the SIs so that if an incident occurs outside the zone for a rounding or finishing mark then the penalty under rule 44.2 – Two-Turns Penalty shall be one turn including one tack and one gybe.

## 11. SCORING

- 11.1. Seven (7) races are scheduled of which three (3) must be completed to constitute a series for the One-Design, and PHRF classes.
- 11.2. Random Leg Fleets: Three (3) races are scheduled of which one (1) must be completed to constitute a series.
- 11.3. The regatta will be scored as provided in the RRS except that all a boat's race scores will count (i.e. no scores will be excluded).
- 11.4. PHRF Classes will be scored using the base handicaps provided by the PHRF Southern California. All PHRF Classes will be scored using time-on-time scoring. For each boat, the "Time Correction Factor" (TCF) used will be calculated based on the following formula:  $TCF = 650 / (625 + PHRF)$  where "PHRF" is a boat's base SoCal PHRF handicap.

## 12. BERTHING

- 12.1. We offer free storage and berthing for all boats from Sunday, June 21, 2009 until Tuesday, June 30, 2009.
- 12.2. The number of transient slips and dock space available in Alamitos Bay Marina is limited. Rafting will be necessary and registration is required. Boats requiring a berth in Alamitos Bay Marina for Long Beach Race Week should indicate their intended arrival and departure dates on their entry form.
- 12.3. Berthing assignments will be published on the Long Beach Race Week website. <http://www.lbrw.org> and available at registration.
- 12.4. Boats requesting berthing before Sunday, June 21, 2009 or after Tuesday, June 30, 2009 **MUST** contact the LBYC Waterfront Director for further information: 562-493-5173 or e-mail [raceoffice@lbyc.org](mailto:raceoffice@lbyc.org). Longer term storage is very limited and will be assigned on a first come basis.

## 13. RADIO COMMUNICATION

The Race Committee will make use of VHF radios to keep sailors informed of Start Times, On Course Side (OCS), Postponements and other information regarding the racing.

## 14. PRIZES

- 14.1. Boat of the Day and daily awards to winners in each established fleet will be presented.



# Acura presents Ullman Sails Long Beach Race Week

- 14.2. Overall series awards will be presented to each established fleet.
- 14.3. The following trophies will be presented to individual boats:

### Satarino Boat of the Week

To the class winner whose class featured the closest, most competitive racing for the series

### PHRF Boat of the Week

To the PHRF class winner whose class featured the closest, most competitive racing for the series

### Catalina 37 National Championship

Winner of the Catalina 37 class

### Farr 40 West Coast Championship

Winner of the Farr 40 class

### J/29 West Coast Championship

Winner of the J/29 class

### Open 5.70 West Coast Championship

Winner of the Open 570 class

### Schock 35 Pacific Coast Championship

Winner of the Schock 35 class

### Beneteau 36.7 So California Championship

Winner of the Beneteau 36.7 class

### Cal 25 Carl Kindrich Perpetual Trophy

Winner of the CAL 25 class

### Kent Golison Family Trophy

Highest placing boat in the regatta that is sailed by at least three members of an immediate family

### Travel Trophy

Boat owner who has traveled the farthest (based on hometown)

### Yacht Club Challenge

The yacht club whose team has the lowest combined score

## 15. DISCLAIMER OF LIABILITY

Competitors participate in this regatta entirely at their own risk. See rule 4, Decision to Race. The Organizing Authorities will not accept liability for material damage or personal injury or death sustained in conjunction with or prior to, during or after this regatta.

*\* Informational note: The United States Coast Guard (USCG) requires that all vessels carry a USCG approved personal floatation device for each member of the crew on a boat.*

## 16. RIGHT TO USE NAME AND LIKENESS

By participating in the Long Beach Race Week a competitor automatically grants to the organizers and its sponsors the right in

perpetuity to make, use and show, from time to time at their discretion, any motion pictures and live, taped or filmed television and other reproductions of him or her during the period of the competition without compensation.

## 17. CHARTERED BOATS

Catalina 37 boat chartering will be on first-come first-served basis. For information about chartering from Long Beach Sailing Foundation, or to make a reservation, please contact:

Charter Manager

Phone (562) 493-5173 phone

Fax (562) 430-8471 fax

e-mail [raceoffice@lbyc.org](mailto:raceoffice@lbyc.org)

## 18. HOSPITALITY AND SOCIAL

- 18.1. Information for local hotels can be found at the Long Beach Race Week website. <http://www.lbrw.org>
- 18.2. A social package will also be available for those not racing.

## 19. AMENDMENTS TO THIS NOTICE

The Organizing Authorities reserves the right to amend this notice. Any amendments of this notice made after May 1, 2009 will be posted on the Long Beach Race Week website and e-mailed to those owners whose entries have been accepted.

