

Acura presents Ullman Sails Long Beach Race Week

June 22 - 24, 2007

Alamitos Bay Yacht Club & Long Beach Yacht Club

Long Beach, California USA

<http://www.longbeachraceweek.org>



LONG BEACH RACE WEEK INCLUDES THE FOLLOWING CHAMPIONSHIPS

CATALINA 37 NATIONAL CHAMPIONSHIP

J/29 WEST COAST CHAMPIONSHIP

SCHOCK 35 PACIFIC COAST CHAMPIONSHIP

OLSON 30 PACIFIC COAST CHAMPIONSHIP

BENETEAU 36.7 SOUTHERN CALIFORNIA CHAMPIONSHIP

J/80, J/105, J/109 AND J/120 SOUTHERN CALIFORNIA HIGH POINT SERIES

NOTICE OF RACE

The Organizing Authorities for Long Beach Race Week will be the Alamitos Bay Yacht Club (ABYC), 7201 East Ocean Blvd, Long Beach, CA. 90803 and the Long Beach Yacht Club (LBYC), 6201 Appian Way, Long Beach, CA. 90803.

1. RULES

- 1.1. The Regatta will be governed by the "rules" as defined in The Racing Rules of Sailing (RRS).
- 1.2. Competitors are reminded that under the preamble of Part 2 of the RRS boats racing must comply with rule 9 of the Inland Navigation Rules (72 COLREGS) when they meet other marine traffic.
- 1.3. The Regatta will be a Category 4 event as defined by PHRF of Southern California.
- 1.4. The Marine Industry Racer (MIR) rule of PHRF of Southern California will not apply to this regatta.

2. ADVERTISING

- 2.1. For all classes except Catalina 37s, the Sailing Instructions (SIs) state that advertising on boats is restricted to Category A. See ISAF Regulation 20.3.
- 2.2. For boats of the Catalina 37 class, the SIs state that advertising may not be added to or removed from any equipment supplied with the boat from Long Beach Yacht Club Sailing Foundation.

3. ELIGIBILITY AND ENTRY

- 3.1. This regatta is open to the following **One-Design classes**: Transpac 52s, Catalina 37, Etchells, Farr 40, J/105, , J/109, J/120, J/29, J/80, Martin 242, Melges 24, Mercury 18, Olson 30, Schock 35. Additional One-Design classes will be accepted at the discretion of the Competition Chair based on the number of entries and the classes that are established. Submit requests to info@lbrw.org.
- 3.2. **One-Design classes** not having eight (8) entries by June 19, 2007 shall be automatically registered in a PHRF or ORCA class, if applicable, unless permitted otherwise by the Competition Chair.
- 3.3. This regatta is open to **Performance Handicap Racing Fleet (PHRF)** boats having a PHRF handicap of 222 or less. PHRF boats will be separated into classes based on entries received and performance characteristics of the boats.
- 3.4. This regatta is open to **Ocean Racing Catamaran Association (ORCA)** boats. ORCA boats may be separated into classes based on entries received and performance characteristics of the boats.
- 3.5. **PHRF** and **ORCA** boats wishing to sail random leg courses should indicate so on their entry form.



Acura presents Ullman Sails Long Beach Race Week

- 3.6. Eligible boats may enter by completing the entry form and sending a copy together with the required fee described in NOR 4, to Long Beach Race Week, 6201 Appian Way, Long Beach, CA 90803.
- 3.7. An early entry discount as shown in SI 4 applies to entries received on or before **May 31, 2007**. To receive the discount, the Organizing Authorities must receive a completed entry form with the appropriate fee and attachments by that date. Entry acknowledgment will be e-mailed to valid entrants no later than June 15. **No entries will be accepted after 1800 PST, Tuesday, June 19, 2007** without the approval of the Competition Chair and payment of a substantial additional late fee.
- 3.8. This regatta will be a level C regatta for the J/105 class as defined by Membership and Eligibility rule 3.6 of the J/105 Class Association Rules.
- 3.9. Best efforts will be made to have the preliminary **PHRF** class breaks for each entry posted on the Race Week web site by May 1, 2007.
- 3.10. **PHRF** Class Breaks: In an effort to provide 'like racing' under **PHRF**, boat displacement and other factors will be considered when determining class breaks.

4. FEES

Required Fees are as follows:

LOA	Early Entry Before May 31st	Standard Entry before June 20th
30 Feet and Under including J/29, J/80, Martin 242, Melges 24, Mercury, Olson 30, ORCA & PHRF	\$150	\$200
31-40 Feet including Catalina 37, Farr40, J/105, J/109, Schock 35, ORCA & PHRF	\$200	\$250
41-50 Feet including J/120, ORCA & PHRF	\$250	\$300
Over 50 Feet including Transpac 52, ORCA & PHRF	\$275	\$325

Your entry fee includes the following:

- Entry to Long Beach Race Week
- Friday After Race Party, including complimentary hors d'oeuvres and no host bar

- Saturday After Race Party, including Mt Gay Rum Party, complimentary hors d'oeuvres and no host bar
- Sunday Trophy Presentation Party, including complimentary hors d'oeuvres and no host bar
- Additional party tickets may be purchased at a nominal fee.
- Free berthing for the regatta for ALL boats. To coordinate please see NOR 12.

5. SCHEDULE

- 5.1. Registration at LBYC:
 - Thursday June 21, From 1200 to 1830 2007
 - Friday June 22, 2007 From 0800 to 1000
- 5.2. Measurement, Inspection and Crew Weigh-In at LBYC:
 - Thursday June 21, From 1200 to 1830 2007
 - Friday June 22, 2007 From 0800 to 1000
- 5.3. Competitors' Briefing at LBYC:
 - Friday June 22, 2007 From 1030 to 1100
- 5.4. Dates of Racing:
 - Friday June 22, 2007 1st Warning 1255
 - Saturday June 23, 2007 1st Warning 1155
 - Sunday June 24, 2007 1st Warning 1155

6. MEASUREMENTS

- 6.1. Crew weigh-in is required for One Design classes whose rules specify crew weight limits. The classes include J/105 and Melges 24.
- 6.2. All boats are subject to additional measurement at any time at the reasonable discretion of the Competition Chair.
- 6.3. Following each day's racing one or more PHRF or ORCA boats may be inspected for compliance with their handicap certificate.

7. SAILING INSTRUCTIONS

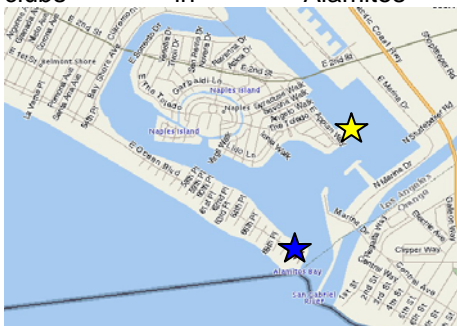
- 7.1. Sailing Instructions (SIs) will be available at registration.
- 7.2. Preliminary SIs will be available on the Long Beach Race Week website <http://www.lbrw.org> on or before May 1st, 2007.
- 7.3. The Organizing Authorities reserve the right to amend versions of the SIs on the website without prior notice.



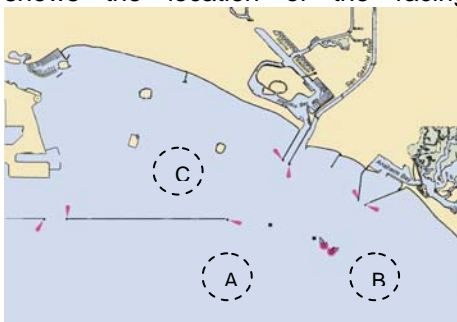
Acura presents Ullman Sails Long Beach Race Week

8. VENUE

- 8.1. The ABYC ★ and LBYC ★ are located on Alamitos Bay, which is situated in the southeastern part of Long Beach California. The diagram below shows locations of the two clubs in Alamitos Bay.



- 8.2. It is anticipated that there will be three (3) separate racing areas, each with its own race committee. As entries and class splits are not known in advance, it is not possible to assign racing areas in advance. The diagram below shows the location of the racing areas.



9. THE COURSES

- 9.1. The courses for One-Design, PHRF and ORCA classes will be of a windward leeward configuration.
- 9.2. The courses for the Random Leg fleet will be selected from those published in the Sailing Instructions. Those courses will include a variety of course lengths around marks and landmarks in San Pedro Bay area, both inside and outside the Federal breakwater.

10. PENALTY SYSTEM

Rule 44 will be changed in the SIs so that if an incident occurs outside the two-length zone for a rounding or finishing mark then the penalty under rule 44.2 – Two-Turns Penalty shall be one turn including one tack and one gybe.

11. SCORING

- 11.1. Seven (7) races are scheduled of which three (3) must be completed to constitute a series for the One-Design, PHRF and ORCA fleets.
- 11.2. Random Leg Fleets: Three (3) races are scheduled of which one (1) must be completed to constitute a series.
- 11.3. The regatta will be scored as provided in the RRS except that all a boat's race scores will count (i.e. no scores will be excluded). All PHRF Classes will be scored using time-on-time scoring. For each boat, the "Time Correction Factor" (TCF) used will be calculated based on the following formula: $TCF = 650 / (625 + PHRF)$ where "PHRF" is a boat's base SoCal PHRF handicap.
- 11.4. PHRF Classes will be scored using the base handicaps provided by the PHRF Southern California. All PHRF Classes will be scored using time-on-time scoring. For each boat, the "Time Correction Factor" (TCF) used will be calculated based on the following formula: $TCF = 650 / (625 + PHRF)$ where "PHRF" is a boat's base SoCal PHRF handicap.

12. BERTHING

- 12.1. We offer free storage and berthing for all boats from Sunday, June 16, 2007 until Tuesday, June 26, 2007.
- 12.2. The number of transient slips and dock space available in Alamitos Bay Marina is limited. Rafting will be necessary and registration is required. Boats requiring a berth in Alamitos Bay Marina for Long Beach Race Week should indicate their intended arrival and departure dates on their entry form.
- 12.3. Berthing assignments will be published on the Long Beach Race Week website. <http://www.lbrw.org> and available at registration.
- 12.4. Boats requesting berthing before Sunday, June 16, 2007 or after Tuesday, June 26, 2007 **MUST** contact the LBYC Waterfront Director for further information: 562-493-5173 or e-mail raceoffice@lbyc.org. Longer term storage is very limited and will be assigned on a first come basis.

13. RADIO COMMUNICATION

The Race Committee will make use of VHF radios to keep sailors informed of Start Times, On Course Side (OCS), Postponements and other information regarding the racing.



Acura presents Ullman Sails Long Beach Race Week

14. PRIZES

- 14.1. Boat of the Day and daily awards to winners in each established fleet will be presented.
- 14.2. Overall series awards will be presented to each established fleet.
- 14.3. The following trophies will be presented to individual boats:

Satarino Boat of the Week

To the class winner whose class featured the closest, most competitive racing for the series

PHRF Boat of the Week

To the PHRF class winner whose class featured the closest, most competitive racing for the series

Catalina 37 National Championship

Winner of the Catalina 37 class

J/29 West Coast Championship

Winner of the J/29 class

Olson 30 Pacific Coast Championship

Winner of the Olson 30 class

Schock 35 Pacific Coast Championship

Winner of the Schock 35 class

Beneteau 36.7 So California Championship

Winner of the Beneteau 36.7 class

Kent Golison Family Trophy

Highest placing boat in the regatta that is sailed by at least three members of an immediate family

Travel Trophy

Boat owner who has traveled the farthest (based on hometown)

Yacht Club Challenge

The yacht club whose team has the lowest combined score

15. DISCLAIMER OF LIABILITY

Competitors participate in this regatta entirely at their own risk. See rule 4, Decision to Race. The Organizing Authorities will not accept liability for material damage or personal injury or death sustained in conjunction with or prior to, during or after this regatta.

** Informational note: The United States Coast Guard (USCG) requires that all vessels carry a USCG approved personal floatation device for each member of the crew on a boat.*

16. RIGHT TO USE NAME AND LIKENESS

By participating in the Long Beach Race Week a competitor automatically grants to the organizers and its sponsors the right in

perpetuity to make, use and show, from time to time at their discretion, any motion pictures and live, taped or filmed television and other reproductions of him or her during the period of the competition without compensation.

17. CHARTERED BOATS

Catalina 37 boat chartering will be on first-come first-served basis. For information about chartering from Long Beach Sailing Foundation, or to make a reservation, please contact:

Charter Manager

Phone (562) 493-5173 phone

Fax (562) 430-8471 fax

e-mail raceoffice@lbyc.org

18. HOSPITALITY AND SOCIAL

- 18.1. Information for local hotels can be found at the Long Beach Race Week website. <http://www.lbrw.org>
- 18.2. A social package will also be available for those not racing.

19. AMENDMENTS TO THIS NOTICE

The Organizing Authorities reserves the right to amend this notice. Any amendments of this notice made after May 1, 2007 will be posted on the Long Beach Race Week website and e-mailed to those owners whose entries have been accepted.

