

Ullman Sails Long Beach Race Week



June 24 - 26, 2005
Alamitos Bay Yacht Club & Long Beach Yacht Club
Long Beach, California USA
<http://www.lbrw.org>



SAILING INSTRUCTIONS

The Organizing Authorities for Ullman Sails Long Beach Race Week will be the Alamitos Bay Yacht Club 7201 East Ocean Blvd, Long Beach, CA. 90803 and the Long Beach Yacht Club 6201 Appian Way, Long Beach, CA. 90803.

1. RULES

- 1.1. The Regatta will be governed by the "rules" as defined in The Racing Rules of Sailing (RRS).
- 1.2. Competitors are reminded that under the preamble of Part 2 of the RRS boats racing must comply with Rule 9 of the Inland Navigation Rules (72 COLREGS) when they meet other marine traffic.
- 1.3. The Marine Industry Racer (MIR) rule of Southern California PHRF will not apply to this regatta.

2. ADVERTISING

- 2.1. For all classes except Catalina 37s, advertising on boats is restricted to Category A. See ISAF Regulation 20.3.
- 2.2. For boats of the Catalina 37 class, advertising may not be added to or removed from any equipment supplied with the boat from Long Beach Yacht Club Sailing Foundation.

3. ADDITIONAL IDENTIFICATION

- 3.1. Bow numbers will be required for the J/105 class only. Each boat in these classes will be assigned a bow number. These bow numbers shall be displayed on both sides of the bow approximately 6-10 inches below deck level and between 8-14 inches aft of the bow.
- 3.2. Boats failing to display event bow stickers or bow numbers may be subject to protest by the Race Committee.

4. NOTICES TO COMPETITORS

Notices to competitors will be posted on the official notice board(s) located at Alamitos Bay Yacht Club on the glass doors of the Quarterdeck overlooking Basin 5 and at Long Beach Yacht Club on the glass sliding doors and windows of the Regatta Room which is located on the East face of the club, bottom floor overlooking the channel.

5. CHANGES TO SAILING INSTRUCTIONS

Any change to the sailing instructions will be posted before 0900 on the day it will take effect, except that any change to the schedule of races will be posted by 2000 on the day before it will take effect.



Ullman Sails Long Beach Race Week

6. SIGNALS MADE ASHORE

- 6.1. Signals made ashore will be displayed on both the Alamitos Bay Yacht Club and the Long Beach Yacht Club flag poles. When a signal is displayed over the appropriate Division letter flag it applies to that Division only.
- 6.2. When flag AP is displayed ashore, '1 minute' is replaced with 'not less than sixty (60) minutes' in race signal AP. Boats are requested not to leave the harbor until this signal is lowered.
- 6.3. The Race Committee will broadcast its intent to the three Divisions on the VHF Channels designated in SI 24 (VHF 68, 72, 73) at 0930.

7. SCHEDULE

- 7.1. Registration at Long Beach Yacht Club:

Thursday June 23, 2005 From 0900 to 1830
Friday June 24, 2005 From 0800 to 1000

- 7.2. Measurement, Inspection and Crew Weigh-In at Long Beach Yacht Club:

Thursday June 23, 2005 From 0900 to 1830
Friday June 24, 2005 From 0800 to 1000

- 7.3. Competitors Meeting at Long Beach Yacht Club:

Friday June 24, 2005 From 1000 to 1030

- 7.4. Dates of Racing:

| | | |
|-------------------------------|---|-------------|
| <i>Friday June 24, 2005</i> | <i>Warning Signal for 1st race of day.</i> | <i>1255</i> |
| <i>Saturday June 25, 2005</i> | <i>Warning Signal for 1st race of day.</i> | <i>1055</i> |
| <i>Sunday June 26, 2005</i> | <i>Warning Signal for 1st race of day.</i> | <i>1055</i> |

8. CLASS FLAGS

Class flags will be solid color flags. Class flag colors will be posted on the day before they take effect.

9. RACING AREAS

- 9.1. Attachment A – Racing Areas shows the location of Racing Areas A, B, and C.
- 9.2. Assignments of classes to Divisions, and Divisions to Racing Areas will be posted by 1700 on the day before they will take effect.

10. THE COURSES

- 10.1. The diagrams in Attachment B – Illustrating the Course show the courses, including the course signals, approximate angles between legs, the order in which marks are to be passed, and the side on which each mark is to be left. The course lengths will be adjusted to provide appropriate amounts of racing.
- 10.2. The course designation will be displayed on a placard from the Race Committee Signal Boat.
- 10.3. No later than the warning signal, the Race Committee Signal Boat will display the approximate compass bearing and distance to the first mark.
- 10.4. When there is a gate, boats shall sail between the gate marks from the direction of the previous mark and round either gate mark.

11. MARKS

- 11.1. Marks 1, 2S and 2P will be Yellow Inflatable Shapes.
- 11.2. Mark 1 Offset, will be a whip buoy with a white flag.
- 11.3. New marks, as provided in instruction 14, will be Orange Inflatable Shapes.



Ullman Sails Long Beach Race Week

- 11.4. The starting and finishing marks will be staffs mounted on whip marks.

12. THE START

- 12.1. Flag F (Attention Signal) will be displayed with one sound 5 minutes before the initial Warning Signal for the first class to start each race. Flag F will be lowered with one sound one minute before the initial Warning Signal is made.
- 12.2. The starting line will be between staffs displaying orange flags. One end shall and both ends may be on Race Committee Boats. A yellow inflatable mark may be attached to the Race Committee Boat(s) and shall be considered part of the Starting Mark for the purposes of RRS 28 and 31.
- 12.3. Boats whose warning signal has not been made shall avoid the starting area.
- 12.4. A boat starting later than 10 minutes after her starting signal will be scored Did Not Start. This changes rule A4.1.

13. RECALLS

- 13.1. As a courtesy, the Race Committee will attempt to notify recalled boats by hailing their sail number over the designated VHF channel. Failure of a boat to see or hear her recall notification shall not relieve her of her obligation to start correctly and shall not be grounds for redress. A boat's position in the sequence of hailed numbers or broadcast numbers shall not be grounds for redress.
- 13.2. For those classes with bow numbers, the Race Committee will attempt to hail each boat by her bow number.

14. CHANGE OF THE NEXT LEG OF THE COURSE

To change the next leg of the course, the race committee will lay a new mark (or move the finishing line) and remove the original mark as soon as practicable. When in a subsequent change a new mark is replaced, it will be replaced by an original mark.

15. THE FINISH

The finishing line will be between staffs displaying orange flags. One end shall and both ends may be located on a Race Committee Boat.

16. PENALTY SYSTEM

- 16.1. Rule 44 is changed so that if an incident occurs outside the two-length zone for a rounding or finishing mark the penalty under rule 44.2 – Two-Turns Penalty shall be one turn including one tack and one gybe.
- 16.2. Arbitration of protests involving a rule of Part 2 of the RRS will occur. The arbitration penalty will be a scoring penalty of 40% calculated as provided in rule 44.3(c).

17. TIME LIMITS AND TARGET TIMES

- 17.1. The target time for races will be approximately 60 minutes.
- 17.2. The time limit for the first boat is two (2) hours.
- 17.3. Boats failing to finish within 30 minutes after the first boat sails the course and finishes will be scored Did Not Finish. This changes rules 35 and A4.1.

18. PROTESTS AND REQUESTS FOR REDRESS

- 18.1. Protest forms are available at the race offices at Alamitos Bay and Long Beach Yacht Clubs. Protests shall be delivered to either venue within the protest time limit.
- 18.2. Protest Filing Time will close forty-five (45) minutes after the Race Committee Signal Boat for that Division docks. To measure the time until Protest Filing Time closes for a Division, as the Race Committee Signal Boat docks, the appropriate Division flag (white flag with the letter A, B, or C) will



Ullman Sails Long Beach Race Week

be hoisted and one (1) sound signal will be made. Each Division flag will be flown for forty five (45) minutes and lowered with one (1) sound signal to mark the close of protest time.

- 18.3. Notices will be posted within 30 minutes of the protest time limit to inform competitors of hearings in which they are parties or named as witnesses. This will constitute notice to all parties under rule 63.2. Hearings will normally be heard in the order in which protests and requests for redress are received.
- 18.4. Breaches of instructions 2, 3, 12.3, 12.4, 17.3, 21, 22, 23, 24 will not be grounds for a protest by a boat. This changes rule 60.1(a). Penalties for these breaches may be less than disqualification if the protest committee so decides.
- 18.5. On the last day of the regatta a request for reopening a hearing shall be delivered
(a) within the protest time limit if the party requesting reopening was informed of the decision on the previous day;
(b) no later than 30 minutes after the party requesting reopening was informed of the decision on that day.
This changes rule 66.

19. ARBITRATION

- 19.1. For protests involving an alleged breach of a rule of Part 2, a short arbitration hearing will be held prior to a protest hearing. This changes Part 5, Section B of the RRS.
- 19.2. After a written protest is delivered to the Protest Clerk, one representative from each boat will meet with the arbitrator unless the protestor requests that the protest be withdrawn. No witnesses will be allowed. Protests not resolved by arbitration will be forwarded to the Protest Committee.
- 19.3. A boat that accepts the arbitrator's opinion that she broke a rule of Part 2 shall receive a penalty score of 40% as detailed in Sailing Instruction 16.2
- 19.4. The acceptance of an arbitrator's opinion cannot be grounds for redress or be appealed.
- 19.5. The arbitrator will not be a member of the Jury that hears the protest but will be permitted to observe the testimony given to the Jury and offer testimony. This changes rule 63.3(a).

20. SCORING

The regatta will be scored as provided in the RRS except that all a boat's race scores will count (i.e. no scores will be excluded). At least one (1) race is required to be completed to constitute a series.

21. SAFETY REGULATIONS

- 21.1. Check-In at the race committee signal boats is not required however, competitors are requested to sail by the stern of the Race Committee Signal Boat, and hail their sail numbers before their warning signal on each day of racing.
- 21.2. A boat that retires from a race shall notify the Race Committee as soon as possible.

22. REPLACEMENT OF CREW OR EQUIPMENT

- 22.1. Entrants in classes that have an established crew weight limit and require weigh-ins must have their crews weighed-in by 1000 Friday, June 24.
- 22.2. In classes that require crew weigh-ins, entrants desiring to substitute crew must have substitute crew members weighed-in prior to 0900 on race day (Saturday and Sunday) at Race Headquarters located at LBYC. A crew substitution card, with the name of the substitute (who meets all requirements) and crew member replaced, must be submitted when being weighed-in and signed by a designated Race Committee official. Crew substitution cards are available at Race Headquarters.

23. SUPPORT BOATS

Media, support, and spectator boats shall stay clear of the starting area and shall not interfere in any way with boats racing or with the Race Committee. Media, support, and spectator boats shall



Ullman Sails Long Beach Race Week

comply with this instruction and with the oral directives of the Race Committee on the water. Failure to comply may result in the protest and disqualification of a racing boat associated with any offending ancillary boat.

24. HAUL-OUT RESTRICTIONS

Boats shall not be hauled out during the regatta except with and according to the terms of prior written permission of the Competition Chair.

25. RADIO COMMUNICATION

- 25.1. The Race Committee will not be able to respond to transmissions from competitors except to acknowledge retirements, protests, penalties reported, or requests for emergency assistance. The Race Committee will use the following VHF Channels for communication:
Division A - Channel 68
Division B - Channel 72
Division C – Channel 73
- 25.2. The Race Committee will use the VHF radios to make competitors aware of its intentions, the course to be sailed, starting times, course changes, On Course Side (OCS), postponements, and other information regarding the racing. Failure of the Race Committee to make a broadcast, the timing of a broadcast, or the failure of a boat to hear a broadcast shall not be grounds for redress under Rule 62.1(a).
- 25.3. A boat shall neither make radio or mobile phone transmissions while racing nor receive communications not available to all boats.

26. PRIZES

- 26.1. Daily awards will be presented to each established fleet.
- 26.2. Overall series awards will be presented to each established fleet.
- 26.3. The "Boat of the Week," trophy will be presented to the class winner whose class featured the closest, most competitive racing for the series.
- 26.4. The "PHRF Boat of the Week," trophy will be presented to the PHRF class winner whose class featured the closest, most competitive racing for the series.
- 26.5. The "Travel Trophy" will be presented to that boat owner who has traveled the farthest (based on hometown).
- 26.6. The Kent Golison Family Trophy will be presented to the highest placing boat in the regatta that is sailed by at least three members of an immediate family. Competitors eligible for the Kent-Golison Trophy shall have no more than one (1) US Sailing Category 3 Competitor aboard, and that person shall not helm the boat.

27. DISCLAIMER OF LIABILITY

Competitors participate in this regatta entirely at their own risk. See rule 4, Decision to Race. The Organizing Authorities will not accept liability for material damage or personal injury or death sustained in conjunction with or prior to, during or after this regatta.

* Informational note: The United States Coast Guard (USCG) requires that all vessels carry an USCG approved personal floatation device for each member of the crew on a boat.

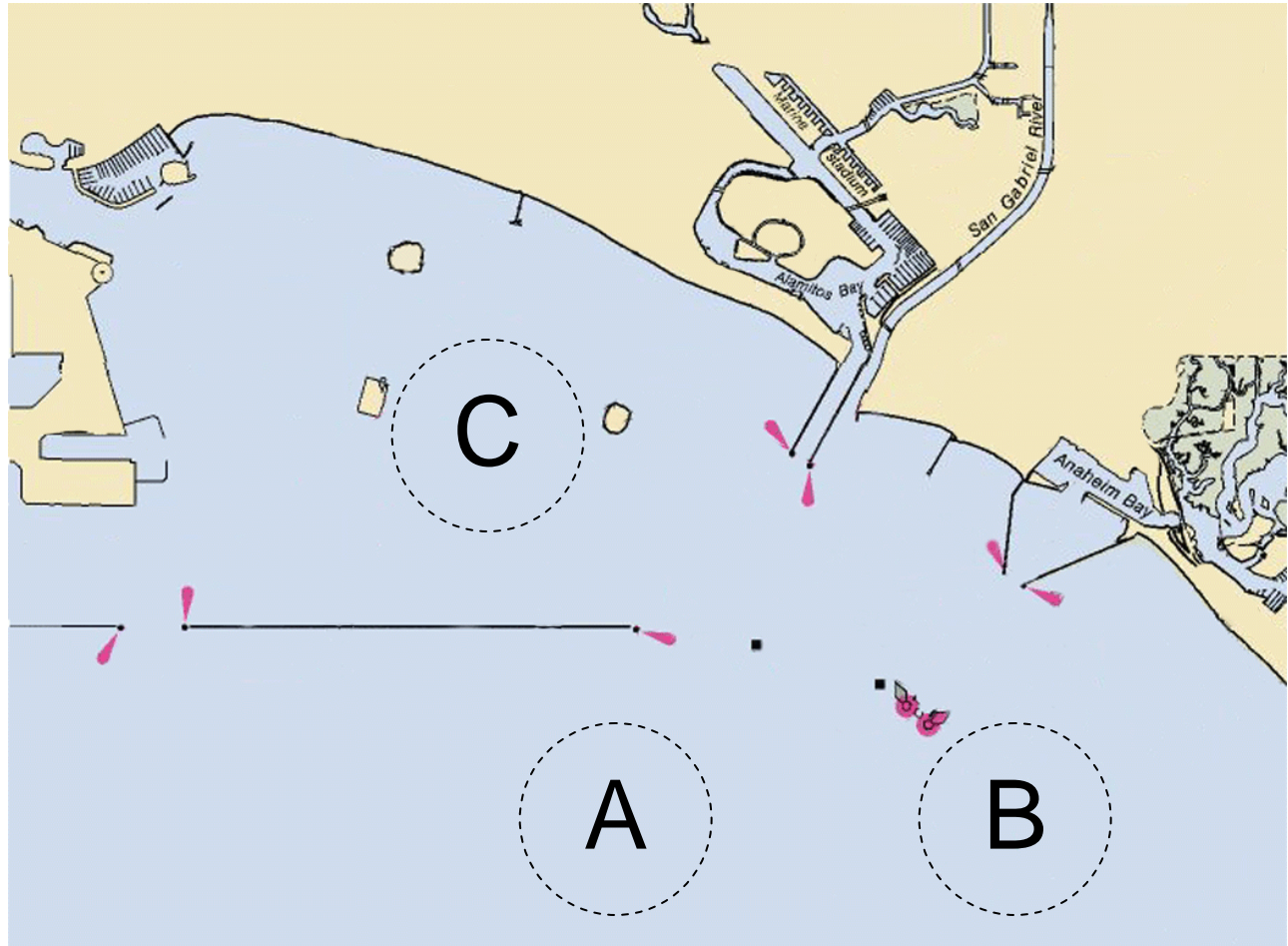
28. AMENDMENTS TO THESE INSTRUCTIONS

The Organizing Authorities reserves the right to amend these instructions. Any amendments of these instructions made prior to June 1, 2005 will be posted on the Race Week web site. Amendments made after June 1, 2005 will be posted on the Official Notice Board and copies will be available at Race Headquarters.



Ullman Sails Long Beach Race Week

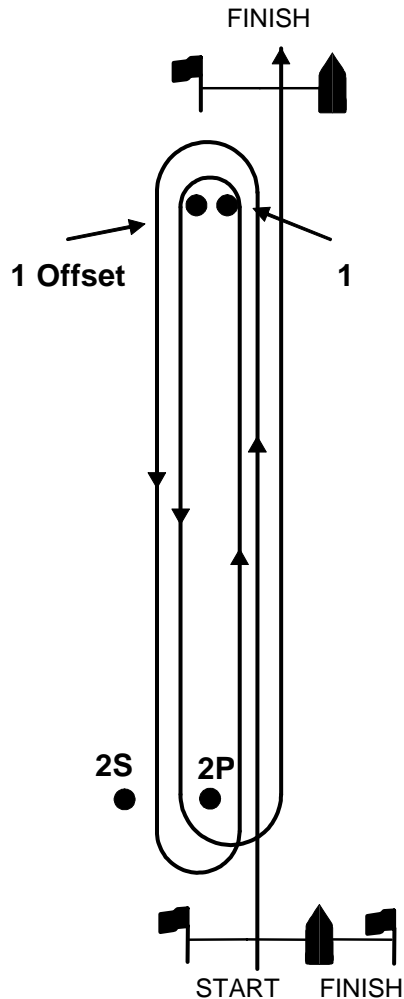
Attachment A – Racing Areas



Ullman Sails Long Beach Race Week

Attachment B – Illustrating the Course

Windward-Leeward Course (5 leg course example)



| Course # | Mark Rounding Order (all marks rounded to port) |
|------------|---|
| 3 (3 legs) | Start – 1 – 1 Offset – 2 – Finish |
| 4 (4 legs) | Start – 1 – 1 Offset – 2 – 1 – 1 Offset – Finish |
| 5 (5 legs) | Start – 1 – 1 Offset – 2 – 1 – 1 Offset – 2 – Finish |
| 6 (6 legs) | Start – 1 – 1 Offset – 2 – 1 – 1 Offset – 2 – 1 – 1 Offset – Finish |