

# Ullman Sails Long Beach Race Week

June 24 - 26, 2005

Alamitos Bay Yacht Club & Long Beach Yacht Club

Long Beach, California USA

<http://www.longbeachraceweek.org>



## NOTICE OF RACE

The Organizing Authorities for Ullman Sails Long Beach Race Week will be the Alamitos Bay Yacht Club 7201 East Ocean Blvd, Long Beach, CA. 90803 and the Long Beach Yacht Club 6201 Appian Way, Long Beach, CA. 90803.

### 1. RULES

- 1.1. The Regatta will be governed by the **"rules"** as defined in The Racing Rules of Sailing (RRS).
- 1.2. Competitors are reminded that under the preamble of Part 2 of the RRS boats racing must comply with rule 9 of the Inland Navigation Rules (72 COLREGS) when they meet other marine traffic.
- 1.3. The Marine Industry Racer (MIR) rule of Southern California PHRF will not apply to this regatta.

### 2. ADVERTISING

- 2.1. For all classes except Catalina 37s, the Sailing Instructions (SIs) will provide that advertising on boats is restricted to Category A. See ISAF Regulation 20.3.
- 2.2. For boats of the Catalina 37 class, the SIs will provide that advertising may not be added to or removed from any equipment supplied with the boat from Long Beach Yacht Club Sailing Foundation.

### 3. ELIGIBILITY AND ENTRY

- 3.1. This regatta is open to the following **One-Design classes**: 1D35, Cal 25, Catalina 37, Corsair 28R, Express 37, Farr 40, J/105, J/109, J/120, J/24, J/29, J/35, J/80, Melges 24, Olson 30, Santa Cruz 27, Santana 20, Schock 35 and Transpac 52. Additional One-Design classes will be accepted at the discretion of the Competition Chair based on the number of entries and the classes that are established. Submit requests to [raceoffice@lbyc.org](mailto:raceoffice@lbyc.org).
- 3.2. **One-Design classes** not having eight (8) entries by June 21, 2005 shall be automatically registered in a PHRF or ORCA class, if applicable, unless permitted otherwise by the Competition Chair.
- 3.3. This regatta is open to **Performance Handicap Racing Fleet (PHRF)** boats having a PHRF handicap of 222 or less. PHRF boats will be separated into classes based on entries received and performance characteristics of the boats.
- 3.4. This regatta is open to **Ocean Racing Catamaran Association (ORCA)** boats. ORCA boats may be separated into classes based on entries received and performance characteristics of the boats.
- 3.5. **PHRF** and **ORCA** boats wishing to sail random leg courses should indicate so on their entry form.
- 3.6. Eligible boats may be entered by completing the entry form and sending it, together with the required fee described in NOR 4, to Ullman Sails Long Beach Race Week, 6201 Appian Way, Long Beach, CA 90803.
- 3.7. The entry deadline to avoid a late fee is **May 31, 2005**. The Organizing Authorities must receive a completed entry form with the appropriate fee and attachments by that date to avoid the \$50 late fee. Entry acknowledgment will e-mailed to valid entrants no later than June 15. **No entries will be accepted after 1800 PST, Tuesday, June 21, 2005** without the approval of the Competition Chair and payment of a substantial additional late fee.
- 3.8. This regatta will be a level C regatta for the J/105 class as defined by Membership and Eligibility rule 3.6 of the J/105 Class Association Rules.

# Ullman Sails Long Beach Race Week

## 4. FEES

4.1. Required Fees are as follows:

LOA	Fee (before May 31st)	Fee (before June 21st)
<b>30 Feet and Under</b> including Cal 25, Corsair 28R, J/24, J/29, J/80, Melges 24, Santa Cruz 27, Santana 20, ORCA & PHRF	\$150	\$200
<b>31-40 Feet</b> and 1D35, Catalina 37, J/105, J/109, J/35, Schock 35, ORCA & PHRF	\$200	\$250
<b>41-50 Feet</b> and Farr 40, J/120, ORCA & PHRF	\$250	\$300
<b>Over 50 Feet</b> including Transpac 52, ORCA & PHRF	\$275	\$325

Your entry fee includes the following:

- the entry to Ullman Sails Long Beach Race Week
  - the Friday evening hors d'oeuvres and drinks
  - the Saturday evening hors d'oeuvres and drinks
  - the Sunday Trophy Presentation Party
  - Additional party tickets may be purchased at a nominal fee
- 4.2. If you require dockage in Alamitos Bay Marina during this regatta, an additional \$50 must accompany your entry. To coordinate please e-mail [raceoffice@lbyc.org](mailto:raceoffice@lbyc.org). See NOR 12

## 5. SCHEDULE

5.1. Registration:

*Thursday June 23, 2005*      *From 0900 to 1830*  
*Friday June 24, 2005*      *From 0800 to 1000*

5.2. Measurement, Inspection and Crew Weigh-In:

*Thursday June 23, 2005*      *From 0900 to 1830*  
*Friday June 24, 2005*      *From 0800 to 1000*

5.3. Competitors' Briefing:

*Friday June 24, 2005*      *From 1000 to 1030*

5.4. Dates of Racing:

*Friday June 24, 2005*      *Warning Signal for 1<sup>st</sup> race of day.*      *1255*  
*Saturday June 25, 2005*      *Warning Signal for 1<sup>st</sup> race of day.*      *1055*  
*Sunday June 26, 2005*      *Warning Signal for 1<sup>st</sup> race of day.*      *1055*

# Ullman Sails Long Beach Race Week

## 6. MEASUREMENTS

- 6.1. Crew weigh-ins is required for One Design classes whose rules specify crew weight limits. The classes include 1D35, Farr 40, J/105, and Melges 24.
- 6.2. All boats are subject to additional measurement at any time at the reasonable discretion of the Competition Chair.
- 6.3. Following each day's racing one or more PHRF or ORCA boats may be inspected for compliance with their handicap certificate.

## 7. SAILING INSTRUCTIONS

- 7.1. Sailing Instructions (SIs) will be available at registration.
- 7.2. Preliminary SIs will be available on the Ullman Sails Long Beach Race Week website <http://www.lbrw.org> approximately one month prior to this regatta.
- 7.3. The Organizing Authorities reserve the right to amend versions of the SIs on the website without prior notice.

## 8. VENUE

- 8.1. The Alamitos Bay and Long Beach Yacht Clubs are located on Alamitos Bay, which is situated in the South Eastern part of Long Beach California. The diagram opposite shows locations of the two clubs in Alamitos Bay.

- 8.2. It is anticipated that there will be three (3) separate racing areas, each with its own race committee. As entries and class splits are not known in advance, it is not possible to assign racing areas in advance. The diagram opposite shows the location of the racing areas.

## 9. THE COURSES

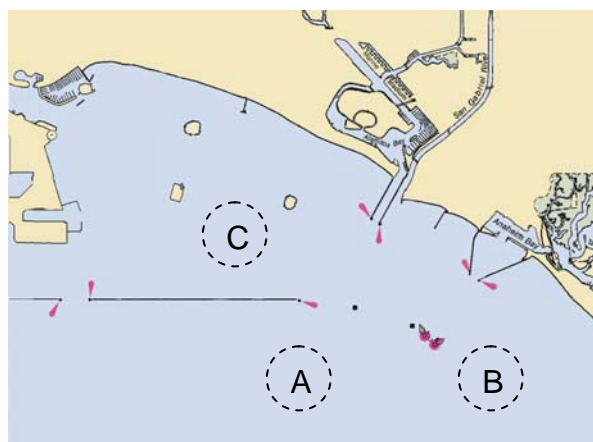
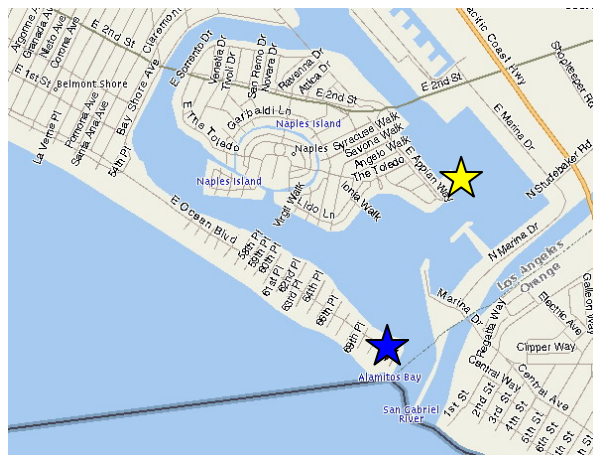
The courses to be sailed will be of a windward leeward configuration except for the random leg fleet.

## 10. PENALTY SYSTEM

- 10.1. Rule 44 will be changed in the SIs so that if an incident occurs outside the two-length zone for a rounding or finishing mark then the penalty under rule 44.2 – Two-Turns Penalty shall be one turn including one tack and one gybe.
- 10.2. For all classes except the Farr 40 class, the SIs will provide for arbitration of protests involving a rule of Part 2 of the RRS. The arbitration penalty will be a scoring penalty of 40% calculated as provided in rule 44.3(c).

## 11. SCORING

- 11.1. Seven (7) races are scheduled of which three (3) must be completed to constitute a series, except the random leg fleet for which three (3) races are scheduled of which one (1) must be completed to constitute a series.
- 11.2. The regatta will be scored as provided in the RRS except that all a boat's race scores will count (i.e. no scores will be excluded).
- 11.3. PHRF Classes will be scored using the base handicaps provided by the PHRF Southern California.



# Ullman Sails Long Beach Race Week

## 12. BERTHING

- 12.1. There are a limited number of transient slips and dock space available in Alamitos Bay Marina. Rafting will be necessary and registration is required along with a \$50 berthing fee. Please contact the LBYC Waterfront Director for further information: 562-493-5173 or e-mail [raceoffice@lbyc.org](mailto:raceoffice@lbyc.org)
- 12.2. A limited number of free berths for boats under 31ft are available in Alamitos Bay Yacht Club's basin. Rafting will be necessary. Permission will be granted on a first come basis. Please contact the ABYC Office for further information: 562-434-9955 or e-mail [abyc@abyc.org](mailto:abyc@abyc.org)

## 13. RADIO COMMUNICATION

The race committee will make use of VHF radios to keep sailors informed of Start Times, On Course Side (OCS), Postponements, and other information regarding the racing.

## 14. PRIZES

- 14.1. Daily awards will be presented to each established fleet.
- 14.2. Overall series awards will be presented to each established fleet.
- 14.3. The "Boat of the Week," trophy will be presented to the class winner whose class featured the closest, most competitive racing for the series.
- 14.4. The "PHRF Boat of the Week," trophy will be presented to the PHRF class winner whose class featured the closest, most competitive racing for the series.
- 14.5. The "Travel Trophy" will be presented to that boat owner who has traveled the farthest (based on hometown).

## 15. DISCLAIMER OF LIABILITY

Competitors participate in this regatta entirely at their own risk. See rule 4, Decision to Race. The Organizing Authorities will not accept liability for material damage or personal injury or death sustained in conjunction with or prior to, during or after this regatta.

*\* Informational note: The United States Coast Guard (USCG) requires that all vessels carry an USCG approved personal floatation device for each member of the crew on a boat.*

## 16. CHARTERED BOATS

Catalina 37 boat chartering will be on first come first served basis. Charter information is available from Molly McCloud at [raceoffice@lbyc.org](mailto:raceoffice@lbyc.org).

## 17. HOSPITALITY AND SOCIAL

- 17.1. Information for local hotels can be found at the Ullman Sails Long Beach Race Week website. <http://www.lbrw.org>
- 17.2. A social package will also be available for those not racing.

## 18. AMENDMENTS TO THIS NOTICE

The Organizing Authorities reserves the right to amend this notice. Any amendments of this notice made prior to May 1, 2005 will be posted on the Ullman Sails Long Beach Race Week website and mailed to those owners whose entries have been accepted. Amendments will be posted on the Official Notice Board and copies will be available at Race Headquarters.